

City of Onalaska: DBE Program Plan

Policy Statement

Section 26.1, 26.23 Objectives/Policy Statement

The **City of Onalaska** has established a Disadvantaged Business Enterprise (DBE) program in accordance with regulations of the U.S. Department of Transportation (DOT), 49 CFR Part 26¹.

The **City of Onalaska** has received Federal financial assistance from the Department of Transportation, and as a condition of receiving this assistance, the **City of Onalaska** has signed an assurance that it will comply with 49 CFR Part 26.

It is the policy of the **City of Onalaska** to ensure that DBEs are defined in part 26, have an equal opportunity to receive and participate in DOT-assisted contracts. It is also our policy:

1. To ensure nondiscrimination in the award and administration of DOT-assisted contracts;
2. To create a level playing field on which DBEs can compete fairly for DOT-assisted contracts;
3. To ensure that the DBE Program is narrowly tailored in accordance with applicable law;
4. To ensure that only firms that fully meet 49 CFR Part 26 eligibility standards are permitted to participate as DBEs;
5. To help remove barriers to the participation of DBEs in DOT-assisted contracts;
6. To assist the development of firms that can compete successfully in the market place outside the DBE Program.
7. To promote the use of DBEs in all types of federally-assisted contracts and procurement activities.
8. To provide appropriate flexibility of federal financial assistance in establishing and providing opportunities for DBEs.

Sabrina Steger, the City Finance Director, has been delegated as the DBE Liaison Officer. In that capacity Sabrina Steger is responsible for implementing all aspects of the DBE program. Implementation of the DBE program is accorded the same priority as compliance with all other legal obligations incurred by the City of Onalaska in its financial assistance agreements with the Department of Transportation.

The **City of Onalaska** has disseminated this policy statement to DBE and non-DBE business communities that perform work for the City of Onalaska on DOT-assisted contracts via the City of Onalaska's website. The City of Onalaska has also distributed this policy statement to the City of Onalaska Utilities Committee and all the components of the organization. Additionally, this DBE Program Plan is available to the public upon request at 415 Main Street Onalaska, WI 54650.



10/6/2021

Signature

Date

City Administrator

Title

¹ 49 CFR Part 26 <https://www.ecfr.gov/cgi-bin/text-idx?SID=53cd5c89e0e9bdcfc93bae3ae3efb10c&mc=true&node=pt49.1.26&rgn=div5>

SUBPART A - General Requirements

Section 26.1 Objectives

The objectives are found in the policy statement on the first page of this program.

Section 26.3 Applicability

The **City of Onalaska** is the recipient of federal transit funds authorized by Titles I, III, V, and VI of ISTEA, Pub. L. 102-240 or by Federal transit laws in Title 49, U.S. Code, or Titles I, II, and V of the Teas-21, Pub. L. 105-178.

Section 26.5 Definitions

The **City of Onalaska** will adopt the definitions contained in Section 26.5 for this program.

Section 26.7 Non-discrimination Requirements

The **City of Onalaska** will never exclude any person from participation in, deny any person the benefits of, or otherwise discriminate against anyone in connection with the award and performance of any contract covered by 49 CFR part 26 on the basis of race, color, sex, or national origin.

In administering its DBE program, the **City of Onalaska** will not, directly or through contractual or other arrangements, use criteria or methods of administration that have the effect of defeating or substantially impairing accomplishment of the objectives of the DBE program with respect to individuals of a particular race, color, sex, or national origin.

Section 26.11(b) Record Keeping Requirements

The **City of Onalaska** will submit DBE semi-annual reports to the Federal Transit Administration (FTA) in TrAMS.

Bidders List: 26.11(c)

The **City of Onalaska** will create a bidders list, consisting of information about all DBE and non-DBE firms that bid or quote on DOT-assisted contracts. The document attached is the tool the **City of Onalaska** will use in the procurement process of all its solicitations. The bidder list requires bidders/offerors to include the name, address, DBE non-DBE status, age, and annual gross receipts of firms. The bidder's list information will be used to calculate overall DBE goals and will also serve as one of a number of ways to notify prospective firms of solicitations.

Section 26.13 Federal Financial Assistance Agreement

Each financial assistance agreement the City of Onalaska signs with a US DOT operating administration must include the following assurance:

Assurance: 26.13(a)

The **City of Onalaska** shall not discriminate on the basis of race, color, national origin, or sex in the award and performance of any DOT assisted contract or in the administration of its DBE Program or the requirements of 49 CFR part 26. The recipient shall take all necessary and reasonable steps under 49 CFR part 26 to ensure nondiscrimination in the award and administration of DOT assisted contracts. The **City of Onalaska's** DBE Program, as required by 49 CFR part 26 and as approved by DOT, is incorporated by reference in this agreement. Implementation of this program is a legal obligation and failure to carry out

its terms shall be treated as a violation of this agreement. Upon notification to the **City of Onalaska** of its failure to carry out its approved program, the Department may impose sanction as provided for under part 26 and may, in appropriate cases, refer the matter for enforcement under 18 U.S.C. 1001 and/or the Program Fraud Civil Remedies Act of 1986 (31 U.S.C. 3801 et seq.).

This language will appear in financial assistance agreements with sub-recipients.

[Note: This language is to be used verbatim, as it is stated in 26.13(a).]

Contract Assurance: 26.13b

The **City of Onalaska** will ensure that the following clause is placed in every DOT-assisted contract and subcontract:

The contractor, sub-recipient, or subcontractor shall not discriminate on the basis of race, color, national origin, or sex in the performance of this contract. The contractor shall carry out applicable requirements of 49 CFR part 26 in the award and administration of DOT assisted contracts. Failure by the contractor to carry out these requirements is a material breach of this contract, which may result in the termination of this contract or such other remedy as the recipient deems appropriate, which may include, but is not limited to:

- 1) Withholding monthly progress payments;
- 2) Assessing sanctions;
- 3) Liquidated damages, and/or;
- 4) Disqualifying the contractor from future bidding as non-responsible.

[Note: This language is to be used verbatim, as it is stated in 26.13(b)]

A copy of DBE Contract Assurance and Federal Clause language is attached.

SUBPART B - ADMINISTRATIVE REQUIREMENTS

Section 26.21(a)(2) DBE Program Updates

Since the **City of Onalaska** has received a grant of \$250,000 or more in FTA planning, capital, and or operating assistance in a federal fiscal year, it will continue to carry out its DBE program in accordance with 49 CFR part 26.21(a)(2), until all funds from DOT financial assistance have been expended.

The **City of Onalaska** will provide updates representing significant changes in the program to FTA.

Section 26.23 Policy Statement

The Policy Statement is elaborated on the first page of this program.

Section 26.25 DBE Liaison Officer (DBELO)

The **City of Onalaska** has designated the following individual as our DBE Liaison Officer:

Sabrina Steger 415 Main Street Onalaska WI 54650; 608-781-5930; ssteger@onalaskawi.gov

In this capacity, the DBELO is responsible for implementing all aspects of the DBE program and ensuring that the **City of Onalaska** complies with all provision of 49 CFR Part 26. The DBELO has direct, independent access to the **City Administrator** concerning DBE program matters.

An organization chart displaying the DBELO's position in the organization is attached to this program plan.

The DBELO is responsible for developing, implementing and monitoring the DBE program, in coordination with other appropriate officials.

The duties and responsibilities include the following:

1. Gathers and reports statistical data and other information as required by USDOT.
2. Reviews third party contracts and purchase requisitions for compliance with this program.
3. Works with all departments to set overall annual goals.
4. Ensures that bid notices and requests for proposals are available to DBEs in a timely manner.
5. Identifies contracts and procurements so that DBE goals are included in solicitations (both race-neutral methods and contract specific goals attainment and identifies ways to improve progress.
6. Analyzes the **City of Onalaska's** progress toward attainment and identifies ways to improve progress.
7. Advises the CEO on DBE matters and achievement.
8. Plans and participates in DBE training seminars, as needed.

Section 26.27 DBE Financial Institutions

As a recipient of FTA financial assistance, the **City of Onalaska** must thoroughly investigate the full extent of services offered by financial institutions owned and controlled by socially and economically disadvantage individuals in its community and make reasonable efforts to use these institutions. The **City of Onalaska** must also encourage its prime contractors to use such institutions.

The **City of Onalaska** has not identified any minority owned banks or financial institutions in its community. This determination was made by conducting: 1) a NAICS code search of the WisDOT UCP Directory and 2) a search of the banking data available on the Federal Reserve Board for minority owned banks in Western Wisconsin. *See documentation attached.*

The **City of Onalaska** will explore the availability of minority owned businesses or financial institutions when updates are made its DBE Program Plan or more frequently as warranted per federal requirements.

Section 26.29 Prompt Payment Mechanisms

The **City of Onalaska** will include the following clause in each DOT-assisted prime contract:

The prime contractor agrees to pay each subcontractor under this prime contract for satisfactory performance of its contract no later than [30] days from the receipt of each payment the prime contract receives from the **City of Onalaska**. The prime contractor agrees further to return retainage payments to each subcontractor within [30] days after the subcontractors work is satisfactorily completed. Any delay or postponement of payment from the above referenced time frame may occur only for good cause

following written approval of the **City of Onalaska**. This clause applies to both DBE and non-DBE subcontracts.

The **City of Onalaska** will use a **Prompt Payment Log** to monitor timely payments of prime contractors to its subcontractor(s) and **Forms A, B and C** to ensure written certification that the prime contractor is using its subcontractor(s) as specified in its contract documents.

The **City of Onalaska** will proactively review contract payments to subcontractors including DBEs on a quarterly basis to ensure compliance. Payment reviews will evaluate whether the actual amount paid to DBE subcontractors is equivalent to the amounts reported to the **City of Onalaska** by the prime contractor.

The **City of Onalaska** will take steps to resolve disputes and complaints with the prime and subcontractor as to whether work has been satisfactorily completed for purposes of § 26.29.

Complaints by subcontractors regarding the prompt payment requirements are handled according to the **City of Onalaska's** complaint and conflict resolution procedure process.

In addition, the prime contractor must promptly notify the **City of Onalaska** whenever a DBE subcontractor performing work related to this contract is terminated or fails to complete its work, and must make good faith efforts to engage another DBE subcontractor to perform at least the same amount of work. The prime contractor may not terminate any DBE subcontractor and perform that work through its own forces or those of an affiliate without prior written consent of the **City of Onalaska**.

Section 26.31 Directory

The **City of Onalaska** utilizes the Wisconsin Department of Transportation's directory of DBE certified firms. The directory is available on the WisDOT website. <http://wisconsin.gov/Pages/doing-bus/civil-rights/dbe/certified-firms.aspx>

Section 26.33 Overconcentration

The **City of Onalaska** has not identified that overconcentration exists in the types of work that DBEs perform. On the contrary, very few DBE firms are ready, willing and able to provide transportation services in Wisconsin, particularly in rural areas.

This determination was confirmed during the **City of Onalaska's** process for developing its *Transit 3 Year DBE Goal-Setting Methodology Report (FFY2016-2018)* conducted in May 2018. In the **City of Onalaska's** report shows that out of the 504 ready, willing and able firms in Wisconsin identified in the US Census, there were only 15 ready, willing and able DBE firms in the NAICS code transportation categories in the WisDOT UCP Directory. Of the 15 firms, (4) four of the firms were not located in Wisconsin, (2) of the firms were airport concessionaire firms, (8) eight of the firms were located in Milwaukee and only (1) firm was located in La Crosse county. The **City of Onalaska** also reviewed the presence of DBEs in its bidders list analysis during the goal setting process which also showed a low concentration of ready, willing and able DBE firms in Wisconsin and specifically in La Crosse county. See the **City of Onalaska's Transit 3 Year DBE Goal-Setting Methodology Report (FFY2016-2018)**.

The **City of Onalaska** has limited contractible opportunities (i.e., (1) one, five-year contract for transportation services. Because of the limited contractible opportunities, the opportunities for DBEs to participate on contracts is also limited. Even though there is a low concentration of DBE firms in Wisconsin performing transportation services, when the **City of Onalaska** conducts its next procurement for transportation services in 2021 (for transportation services in 2022), it will encourage DBE participation during the procurement process through the use of the city's Bidder's List Information, firms listed on the WisDOT's UCP Directory and working with the La Crosse Area Chamber of Commerce.

Section 26.35 Business Development Programs

The **City of Onalaska** has not established a business development program because such a program is not warranted due to the its limited contractible opportunities (i.e., (1) one contract for transportation services). If needed, the **City of Onalaska** will work with the Federal Transit Administration to develop a business development program.

Section 26.37 Monitoring and Enforcement Mechanisms

The **City of Onalaska** will take the following monitoring and enforcement mechanisms to ensure compliance with 49 CFR Part 26.

1. We will bring to the attention of the US Department of Transportation any false, fraudulent, or dishonest conduct in connection with the program, so that DOT can take the steps (e.g., referral to the Department of Justice for criminal prosecution, referral to the DOT Inspector General, action under suspension and debarment or Program Fraud and Civil Penalties rules) provided in 26.109.
2. We will consider similar action under our own legal authorities, including responsibility determinations in future contracts.
3. We will also provide a monitoring and enforcement mechanism via the use of **Form C** to verify that work committed to DBEs at contract award is actually performed by the DBEs. This will be accomplished by working with WisDOT to determine and appropriate contract administration procedure for the type of procurement.
4. We will keep a running tally of actual payments to DBE firms for work committed to them at the time of contract award.

26.39 Fostering Small Business

The **City of Onalaska** will work to ensure the structure of its contracting requirements facilitate competition by small business concerns, taking all reasonable steps to eliminate obstacles to their participation, including unnecessary and unjustified bundling of contract requirements that may preclude small business participation in procurements as prime contractors or subcontractors.

As warranted, the **City of Onalaska** will use the following strategy to foster small business participation:

On prime contracts not having DBE contract goals, requiring the prime contractor to provide subcontracting opportunities of a size that small businesses, including DBEs, can reasonably perform, rather than self-performing all the work involved.

In addition, when the **City of Onalaska** conducts its procurement for transportation service, it will also consider implementing the following measures encourage small business participation:

- Utilize the **City of Onalaska's** Business Assistance webpage to promote small business opportunities. <https://www.cityofonalaska.com/index.asp?SEC=B9A5AF6F-AF6D-478C-A2B0-BC7EE43E955F>
- Consult the La Crosse Area Chamber of Commerce <https://www.lacrossechamber.com/>
- Consult the University of Wisconsin-La Crosse (SBDC) Small Business Development Center <https://www.uwlax.edu/sbdc/>
- Consult WisDOT's Transit Section for guidance on facilitating small business participation

Business Size Determination

The **City of Onalaska** utilizes the definition of a small business as defined by the Small Business Administration (SBA) standards using the North American Industry Classification System (NAICS) codes appropriate to the type(s) of work a firm seeks to perform on **City of Onalaska** contracts. Verification of this information will be gathered during the **City of Onalaska's** procurement process with use of the Bidder's List.

SUBPART C - GOALS, GOOD FAITH EFFORTS, AND COUNTING

Section 26.43 Set-asides or Quotas

The **City of Onalaska** does not use quotas in any way in the administration of this DBE program.

Section 26.45 Overall Goals

The **City of Onalaska** applies directly to the Federal Transit Administration (FTA) for capital and operating funds to purchase vehicles and contract with a third party to provide public transportation.

Since the **City of Onalaska** receives just over the required threshold of \$250,000 in the amount of \$258,000, the **City of Onalaska** is required to develop a DBE Program Plan and set a three-year goal in accordance with 49 CFR Part 26.45(a-h). The purchase of vehicles is not subject to DBE goal setting.

Triennial goals and reports will be submitted to FTA as separate documents for each goal period.

The **City of Onalaska** contracts with *Running, Inc.* to provide transportation service. Information is available on the **City of Onalaska's** website at <http://www.cityofonalaska.com/masstransit> and <http://www.runninginc.net/onalaska.html>

Section 26.47 Goal Setting and Accountability

To administer the DBE Program Plan in good faith, the **City of Onalaska** will establish a transit DBE goal as outlined its goal setting methodology report submitted every three years to FTA. The city of Onalaska will fully implement steps to meet the approved plan in the spirit and intent of 49 CFR Part 26.

If the **City of Onalaska's** DBE semi-annual reports submitted to FTA do not meet the overall annual goal at the end of a given fiscal year, the **City of Onalaska** will comply with the following requirements to continue operating the DBE Program in good faith: 1) analyze reasons for the difference between the overall goal and its awards and commitments in that fiscal year, 2) establish specific steps and milestones to correct the identified shortfalls, if possible given the upcoming contractible opportunities,

3) document the shortfall analysis and submit to FTA upon request and 4) work with FTA to discuss additional efforts to reach the established DBE goal. *See the FTA website for DBE reporting requirements.*

Section 26.49 Transit Vehicle Manufacturers (TVM) Goals

The **City of Onalaska** must ensure that transit vehicle procurements using FTA funds only occur with Transit Vehicle Manufacturers (TVMs) that adhere to FTA requirements.

For administrative efficiencies and ensuring compliance with TVM requirements, when purchasing vehicles, the **City of Onalaska** purchases vehicles using the State of Wisconsin Department of Transportation's vehicle contract.

The **City of Onalaska** will use the WisDOT *Vehicle Purchase Guide* and *Human Service Vehicle (HSV) Toolkit* when purchasing vehicles. Following all the procurement steps listed in the *Vehicle Purchase Guide* and *Human Service Vehicle (HSV) Toolkit* will ensure the **City of Onalaska** meets the FTA TVM requirements.

WisDOT Vehicle Purchase Guide

<https://wisconsin.gov/Documents/doing-bus/local-gov/astnce-pgms/transit/procurement/vehicle.pdf>

Human Service Vehicle Toolkit

<https://wisconsin.gov/Pages/doing-bus/local-gov/astnce-pgms/transit/procure-hsv.aspx>

The **City of Onalaska** ensures FTA TVM compliance is met by maintaining a complete and accurate procurement file for each vehicle purchase. The HSV toolkit on the WisDOT website has a copy of bid and certification documentation for each vehicle type as well as pre and post-delivery documentation steps.

Section 26.49(a)(4) TVM Reporting Requirement.

Since the **City of Onalaska** purchases off the state vehicle contract, WisDOT is the lead agency for adhering to the TVM Reporting Requirement. WisDOT is required to submit, within 30 days of making an award, the name of the successful transit vehicle manufacturer and the total dollar value of the contract (49 CFR 26.49) using the FTA Transit Vehicle Award Report form. The FTA report form and instructions are found at: on the FTA website <https://www.transit.dot.gov/TVM>.

Section 26.51(a-c) Breakout of Estimated Race-Neutral & Race-Conscious Participation

The **City of Onalaska** will meet the maximum feasible portion of its three-year goal by using race-neutral means of facilitating race-neutral DBE participation. The breakout of estimated race-neutral and race-conscious participation is described in the **City of Onalaska's Transit 3 Year DBE Goal Setting Methodology report**. This section of the program is submitted separately to FTA every three years or more frequently as required by FTA.

Section 26.51 Contract Goals

The **City of Onalaska** will use contract goals on an as needed basis in order to meet any portion of the overall goal. The **City of Onalaska** will establish contract goals only on those DOT-assisted contracts that

have subcontracting possibilities. The city need not establish a contract goal on every such contract (e.g., type and location of work, availability of DBEs to perform the particular type of work). See *Form D - Contract Specific Goal Worksheet*.

To ensure that the **City of Onalaska's** DBE program continues to be narrowly tailored to overcome the effects of discrimination, the city must adjust its use of its contract goals as specified in the following :

- (1) If the city's approved projection estimates that it can meet its entire overall goal for a given year through race-neutral means, the city must implement its program without setting contract goals during that year, unless it becomes necessary in order to meet its overall goal.
- (2) If, during the course of any year in which the city is using its contract goals, the city determines it will exceed its overall goal, it must reduce or eliminate the use of contract goals to the extent necessary to ensure that the use of contract goals does not result in exceeding the overall goal. If the city determines that it will fall short of its overall goal, then it must make appropriate modifications in its use of race-neutral and/or race-conscious measures to allow it to meet the overall goal.
- (3) If the DBE participation the city obtained by race-neutral means alone meets or exceeds its overall goals for two consecutive years, the city is not required to make a projection of the amount of its goal that it can meet using such means in the next year. The city would not set contract goals on any contracts in the next year. The city would continue using only race-neutral means to meet its overall goals unless and until it does not meet its overall goal for a year.
- (4) If the city obtains DBE participation that exceeds its overall goal in two consecutive years through the use of contract goals (*i.e.*, not through the use of race-neutral means alone), the city must reduce its use of contract goals proportionately in the following year.

In any year in which the **City of Onalaska** projects meeting part of its goal through race-neutral means and the remainder through contract goals, the city must maintain data separately on DBE achievements in those contracts with and without contract goals, respectively. The **City of Onalaska** must report this data to FTA as provide in § 26.11.

Section 26.53 Good Faith Efforts Procedures

When conducting solicitations, the **City of Onalaska** will ensure all procurement information is complete and accurate and adequately documents the bidder/offer's good faith efforts before it commits to the performance of a contract by the bidder/offeror.

Demonstration of good faith efforts (26.53(a) & (c))

The obligation of the bidder/offeror is to make good faith efforts. The bidder/offeror can demonstrate that it has done so either by meeting the contract goal or documenting good faith efforts. Examples of good faith efforts are found in Appendix A to Part 26.

Information to be submitted (26.53(b))

The **City of Onalaska** treats bidder/offers' compliance with good faith efforts' requirements as a matter of [responsiveness] or [responsibility].

Each solicitation for which a contract goal has been established will require the bidders/offerors to submit the following information:

1. The names and addresses of DBE firms that will participate in the contract;
2. A description of the work that each DBE will perform;
3. The dollar amount of the participation of each DBE firm participating;
4. Written and signed documentation of commitment to use a DBE subcontractor whose participation it submits to meet a contract goal;
5. Written and signed confirmation from the DBE that it is participating in the contract as provided in the prime contractors commitment and
6. If the contract goal is not met, evidence of good faith efforts.

If a DBE contract goal is established, the **City of Onalaska** will use the documents attached to collect the contract goal information.

Administrative reconsideration (26.53(d))

Within (5) five days of being informed by the **City of Onalaska** that it is not [responsive or responsible] because it has not documented sufficient good faith efforts, a bidder/offeror may request administrative reconsideration.

Bidder/offerors should make this request in writing to the following reconsideration official: Sabrina Steger, City of Onalaska, 415 Main Street, Onalaska, WI 54650, ssteger@onalaskawi.gov, (608)781-9530. The reconsideration official will not have played any role in the original determination that the bidder/offeror did not document sufficient good faith efforts.

As part of this reconsideration, the bidder/offeror will have the opportunity to provide written documentation or argument concerning the issue of whether it met the goal or made adequate good faith efforts to do so. The bidder/offeror will have the opportunity to meet in person with our reconsideration official to discuss the issue of whether it met the goal or made adequate good faith efforts to do. We will send the bidder/offeror a written decision on reconsideration, explaining the basis for finding that the bidder did or did not meet the goal or make adequate good faith efforts to do so. The result of the reconsideration process is not administratively appealable to the Department of Transportation.

Good Faith Efforts with contact goals (26.53(f-g))

(f) (i) The **City of Onalaska** requires that a prime contractor not terminate a DBE subcontractor (or an approved substitute DBE firm) without its prior written consent. This includes, but is not limited to, instances in which a prime contractor seeks to perform work originally designated for a DBE subcontractor with its own forces or those of an affiliate, a non-DBE firm, or with another DBE firm.

(ii) The **City of Onalaska** will include in each prime contract a provision stating:

Unless the contractor obtains written consent from the City of Onalaska:

- (A)** the contractor shall utilize the specific DBEs listed to perform the work and supply the materials for which each is listed and
- (B)** The contractor shall not be entitled to any payment for work or material unless it is performed or supplied by the listed DBE.

(2) The **City of Onalaska** may provide such written consent only if it agrees, for reasons stated in its concurrence document, that the prime contractor has good cause to terminate the DBE firm.

(3) For purposes of this section, *good cause* includes the following circumstances:

(i) The listed DBE subcontractor fails or refuses to execute a written contract;

(ii) The listed DBE subcontractor fails or refuses to perform the work of its subcontract in a way consistent with normal industry standards. Provided, however, that good cause does not exist if the failure or refusal of the DBE subcontractor to perform its work on the subcontract results from the bad faith or discriminatory action of the prime contractor;

(iii) The listed DBE subcontractor fails or refuses to meet the prime contractor's reasonable, nondiscriminatory bond requirements.

(iv) The listed DBE subcontractor becomes bankrupt, insolvent, or exhibits credit unworthiness;

(v) The listed DBE subcontractor is ineligible to work on public works projects because of suspension and debarment proceedings pursuant 2 CFR Parts 180, 215 and 1, 200 or applicable state law;

(vi) The **City of Onalaska** determines that the listed DBE subcontractor is not a responsible contractor;

(vii) The listed DBE subcontractor voluntarily withdraws from the project and provides the **City of Onalaska** written notice of its withdrawal;

(viii) The listed DBE is ineligible to receive DBE credit for the type of work required;

(ix) A DBE owner dies or becomes disabled with the result that the listed DBE contractor is unable to complete its work on the contract;

(x) Other documented good cause that the City of Onalaska determine compels the termination of the DBE subcontractor. Provided, that good cause does not exist if the prime contractor seeks to terminate a DBE it relied upon to obtain the contract so that the prime contractor can self-perform the work for which the DBE contractor was engaged or so that the prime contractor can substitute another DBE or non-DBE contractor after contract award.

(4) Before transmitting to the **City of Onalaska** its request to terminate and/or substitute a DBE subcontractor, the prime contractor must give notice in writing to the DBE subcontractor, with a copy to the **City of Onalaska**, of its intent to request to terminate and/or substitute, and the reason for the request.

(5) The prime contractor must give the DBE (5) five days to respond to the prime contractor's notice and the **City of Onalaska** and the contractor of the reasons, if any, why it objects to the proposed termination of its subcontract and why the **City of Onalaska** should not approve the prime contractor's action. If required in a particular case as a matter of public necessity (*e.g.*, safety), the **City of Onalaska** may provide a response period shorter than (5) five days.

(6) In addition to post-award terminations, the provisions of this section apply to preaward deletions of or substitutions for DBE firms put forward by offerors in negotiated procurements.

(g) When a DBE subcontractor is terminated as provided in this section, or fails to complete its work on the contract for any reason, the **City of Onalaska** must require the prime contractor to make good faith

efforts to find another DBE subcontractor to substitute for the original DBE. These good faith efforts shall be directed at finding another DBE to perform at least the same amount of work under the contract as the DBE that was terminated, to the extent needed to meet the contract goal you established for the procurement. The good faith efforts shall be documented by the contractor. If the recipient requests documentation under this provision, the contractor shall submit the documentation within (7) seven days, which may be extended for an additional (7) seven days if necessary at the request of the contractor, and the **City of Onalaska** shall provide a written determination to the contractor stating whether or not good faith efforts have been demonstrated.

Section 26.55 Counting DBE Participation

The **City of Onalaska** will count DBE participation toward overall and contract goals as provided in 49 CFR 26.55 per the DBE goal reporting requirements.

SUBPART D - CERTIFICATION STANDARDS

Section 26.61 - 26.73 Certification Process

The **City of Onalaska** does not have a certification process. The **City of Onalaska** directs any firms interested in becoming DBE certified to contact the Wisconsin Department of Transportation. Information on the WisDOT DBE Certification Process is available at:
<http://wisconsindot.gov/Pages/doing-bus/civil-rights/dbe/eligibility-requirements.aspx>

SUBPART E - CERTIFICATION PROCEDURES

Section 26.81 Unified Certification Programs

The **City of Onalaska** is not UCP agency. The City of Onalaska will direct any firm interested in DBE certification to contact WisDOT. Information on WisDOT's UCP is available on the WisDOT website
<http://wisconsindot.gov/Pages/doing-bus/civil-rights/dbe/eligibility-requirements.aspx>

Section 26.83 Procedures for Certification Decisions

The **City of Onalaska** is not a UCP certifying agency and therefore a procedure for re-certification is not applicable.

SUBPART F - COMPLIANCE AND ENFORCEMENT

Section 26.109 Information, Confidentiality, Cooperation and Intimidation and Retaliation

Information. The **City of Onalaska** will follow federal, state and local law to safeguard confidential business information. Notwithstanding any contrary provisions of state or local law, the **City of Onalaska** will not release personal financial information submitted in response to the personal net worth requirement to a third party (other than DOT) without the written consent of the submitter.

Confidentiality of information on complainants. The identity of complainants related to prime and contractors shall be kept confidential, at their election. If such confidentiality will hinder an investigation, proceeding or hearing, or result in a denial of appropriate administrative due process to other parties, the complainant must be advised for the purpose of waiving the privilege. Complainants

are advised that, in some circumstances, failure to waive the privilege may result in the closure of the investigation or dismissal of the proceeding or hearing.

Cooperation. All participants in the **City of Onalaska's** DBE program (including, but not limited to, recipients, DBE firms and applicants for DBE certification, complainants and appellants, and contractors using DBE firms to meet contract goals) are required to cooperate fully and promptly with USDOT and recipient compliance reviews, certification reviews, investigations, and other requests for information. Failure to do so shall be a ground for appropriate action against the party involved (e.g., with respect to recipients, a finding of noncompliance; with respect to DBE firms, denial of certification or removal of eligibility and/or suspension and debarment; with respect to a complainant or appellant, dismissal of the complaint or appeal; with respect to a contractor which uses DBE firms to meet goals, findings of non-responsibility for future contracts and/or suspension and debarment).

Intimidation and retaliation. The **City of Onalaska** as a recipient of federal financial assistance must not intimidate, threaten, coerce, or discriminate against any individual or firm for the purpose of interfering with any right or privilege secured by this part or because the individual or firm has made a complaint, testified, assisted, or participated in any manner in an investigation, proceeding, or hearing under this part. If you violate this prohibition, you are in noncompliance with this part.

Monitoring Payments to DBEs

The **City of Onalaska** will require prime contractors to maintain records and documents of payments to DBEs for three years following the performance of the contract. These records will be made available for inspection upon request by any authorized representative of the **City of Onalaska** or DOT. This reporting requirement also extends to any certified DBE subcontractor.

The **City of Onalaska** will perform interim audits of contract payments to DBEs. The audit will review payments to DBE subcontractors to ensure that the actual amount paid to DBE subcontractors equals or exceeds the dollar amounts states in the schedule of DBE participation.

Attachments

Bidders List

2021 DBE Boilerplate Language

Onalaska Organizational Chart

NAICS Code Search 7-12-2021

Federal Reserve Search 2 nd Quarter 2021

Prompt Payment Log

Form A – DBE Commitment

Form B – DBE Confirmation

Form C – DBE Work Site Verification

Form D – DBE Contract Specification Worksheet

DBE Semi-Annual Report Form Template

Bid Opportunity List

Instructions

49 Code of Federal Regulations Part 26.11 requires the City of Onalaska to develop and maintain a "bid opportunity list." The list is intended to show all firms that are participating, or attempting to participate on DOT-assisted contracts. The list must include all firms that bid on prime contracts, or bid or quote subcontracts and materials and supplies on DOT-assisted projects, including DBEs and non-DBES. For consulting companies, this list must include all subconsultants contacting you and expressing an interest in teaming with you on a specific DOT assisted project.

Vendors must complete and submit this form with all bids and/or proposals.

Prime Contractors and Consultants (*complete all columns*)

1. Name of Bidder	2. Bidder's Contact Information (address, phone, email)	3. DBE Status	4. Age of Firm	5. Type of work	6. Annual Gross Receipts
					<input type="checkbox"/> Less than \$500,000 <input type="checkbox"/> \$500,000 - \$1 million <input type="checkbox"/> \$1 million - \$2 million <input type="checkbox"/> \$2 million - \$5 million <input type="checkbox"/> \$5 million and above
					<input type="checkbox"/> Less than \$500,000 <input type="checkbox"/> \$500,000 - \$1 million <input type="checkbox"/> \$1 million - \$2 million <input type="checkbox"/> \$2 million - \$5 million <input type="checkbox"/> \$5 million and above
					<input type="checkbox"/> Less than \$500,000 <input type="checkbox"/> \$500,000 - \$1 million <input type="checkbox"/> \$1 million - \$2 million <input type="checkbox"/> \$2 million - \$5 million <input type="checkbox"/> \$5 million and above
					<input type="checkbox"/> Less than \$500,000 <input type="checkbox"/> \$500,000 - \$1 million <input type="checkbox"/> \$1 million - \$2 million <input type="checkbox"/> \$2 million - \$5 million <input type="checkbox"/> \$5 million and above

					<input type="checkbox"/> Less than \$500,000 <input type="checkbox"/> \$500,000 - \$1 million <input type="checkbox"/> \$1 million - \$2 million <input type="checkbox"/> \$2 million - \$5 million <input type="checkbox"/> \$5 million and above
--	--	--	--	--	--

Note: Each time the **City of Onalaska** conducts a procurement for transportation services it will insert DBE clause language in its solicitation and the Federal Clause list. The **City of Onalaska** will verify this language is still valid and update as needed per DBE and procurement guidance on the USDOT and FTA websites.

Date: 9/30/21

DBE Language for the RFPs

- a. The **City of Onalaska's** DBE transit goal for FFY 2022-2024 is .19%. A separate contract specific goal has not been established for this procurement.
- b. Proposers that have DBE firms participating on this contract should provide the following information:
 1. The names and address of DBE that will participate in this contract.
 2. A description of the work each DBE will perform.
 3. The dollar amount of the participation of each DBE firm participating.
 4. Written documentation of the bidder/offeror's commitment to use a DBE subcontractor.
 5. Written confirmation from the DBE that it is participating in the contract as provided in the prime contractor's commitment.
- c. The successful contractor will be required to report its DBE participation obtained throughout the period of performance.
- d. More information on required DBE documentation is available in Appendix X – Federal Clauses.

Federal Clauses – Appendix X

DISADVANTAGED BUSINESS ENTERPRISE (DBE)

49 CFR Part 26

Background and Applicability: The Disadvantaged Business Enterprise (DBE) program provides guidance to grantees on the use of overall and contract goals, requirement to include DBE provisions in subcontracts, evaluating DBE participation where specific contract goals have been set, reporting requirements, and replacement of DBE subcontractors. Additionally, the DBE program dictates payment terms and conditions (including limitations on retainage) applicable to all subcontractors regardless of whether they are DBE firms or not.

The DBE program applies to all DOT- assisted contracting activities. A formal clause such as that below **must** be included in all contracts and subcontracts above the micro-purchase level.

Clause Language

Each contract the **City of Onalaska** signs with a contractor (and each subcontract the prime contractor signs with a subcontractor) must include the following Federal Clause language:

- a. This contract is subject to the requirements of Title 49, Code of Federal Regulations, Part 26, *Participation by Disadvantaged Business Enterprises in Department of Transportation Financial Assistance Programs*. The **City of Onalaska's** DBE transit goal for FFY 2022-2024 is .19%. A separate contract specific goal has/has not been established for this procurement.

b. The contractor shall not discriminate on the basis of race, color, national origin, or sex in the performance of this contract. The contractor shall carry out applicable requirements of 49 CFR Part 26 in the award and administration of this DOT-assisted contract. Failure by the contractor to carry out these requirements is a material breach of this contract, which may result in the termination of this contract or such other remedy as the **City of Onalaska** deems appropriate, which may include, but is not limited to:

- 1) Withholding monthly progress payments
- 2) Assessing sanctions
- 3) Liquidated damages, and/or
- 4) Disqualifying the contractor from future bidding as non-responsible

c. The contractor shall utilize the specific DBEs listed to perform the work and supply the materials for which each is listed in its written documentation of its contract commitment to the **City of Onalaska** unless the contractor obtains written consent from the **City of Onalaska**.

d. The contractor shall not be entitled to any payment for work or material unless it is performed or supplied by the DBEs as listed in its written documentation of its commitment to the **City of Onalaska** unless the contractor obtains written consent from the **City of Onalaska**.

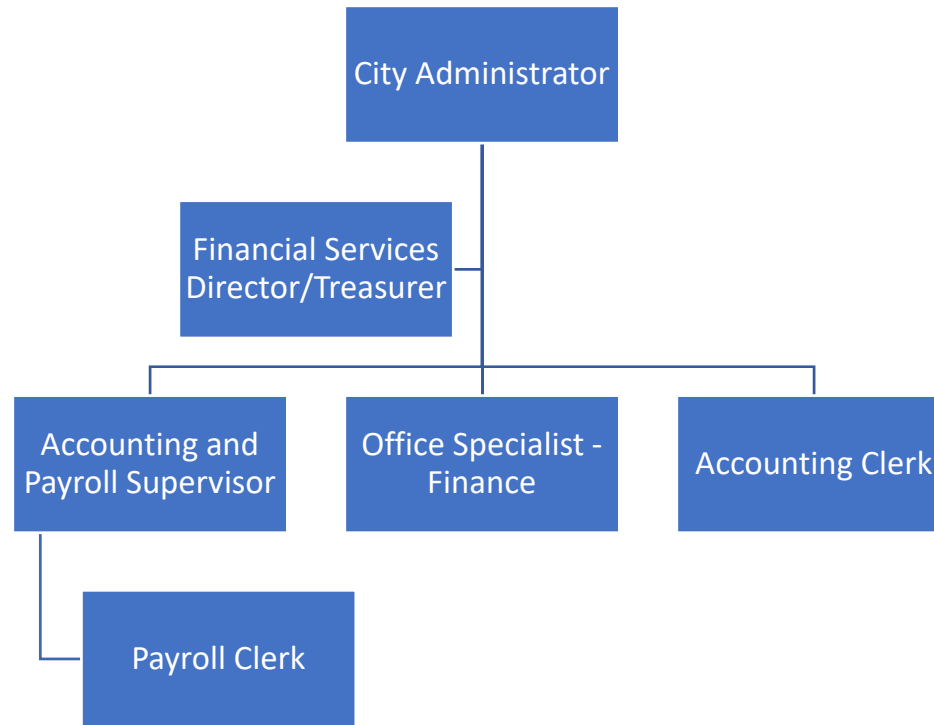
e. The contractor will be required to report its DBE participation obtained throughout the period of performance.

f. The contractor is required to pay its subcontractors performing work related to this contract for satisfactory performance of that work no later than 10 calendar days after the contractor's receipt of payment for that work from the **City of Onalaska**. In addition, the contractor is required to return any retainage payments to those subcontractors within 30 calendar days after incremental acceptance of the subcontractor's work by the **City of Onalaska** and contractor's receipt of the partial retainage payment related to the subcontractor's work.

g. The contractor shall not terminate a DBE subcontractor listed in its written documentation of its commitment to the **City of Onalaska** to use a DBE subcontractor (or an approved substitute DBE firm) without the **City of Onalaska's** prior written consent. This includes, but is not limited to, instances in which a prime contractor seeks to perform work originally designated for a DBE subcontractor with its own forces or those of an affiliate, a non-DBE firm, or with another DBE firm.

h. The contractor must promptly notify the **City of Onalaska** whenever a DBE subcontractor performing work related to this contract is terminated or fails to complete its work, and must make good faith efforts to engage another DBE subcontractor to perform at least the same amount of work. The contractor may not terminate any DBE subcontractor and perform that work through its own forces or those of an affiliate without prior written consent of the **City of Onalaska**.

City of Onalaska - Finance Department



DBE UCP Directory

Updated: July 12, 2021

Note: ACDBE (Concessionaire) Firms are highlighted as 'ACDBE

<http://wisconsindot.gov/Pages/doing-bus/civil-rights/dbe/certified-firms.aspx>

Company Name	Ethnicity	Gender	Certifying Agency	Anniversary Date	Status
#1 Transportation, LLC	Black Americans	F	WisDOT	21-Dec	DBE
1ST AEROW VALUATION GROUP, LLC	Black Americans	M	WisDOT	4-Jan	DBE
1st Resource Solutions, LLC	Black Americans	M	WisDOT	21-May	DBE
24 HR. Towing & Recovery, Inc.	Caucasian	F	Milwaukee County	26-Sep	DBE
2-Story Creative, LTD	Caucasian	F	Milwaukee County	2-Mar	ACDBE/DBE
30th State, LLC	Hispanic Americans	F	Milwaukee County	25-Mar	DBE
3G Trucking, LLC	Caucasian	F	Milwaukee County	10-Jul	DBE
4N CONSULTANTS, INC.	Asian-Pacific Americans	F	Milwaukee County	3-Oct	DBE
A & A Plumbing of Milwaukee	Black Americans	M	Milwaukee County	15-Oct	DBE
A & A TRUCKING AND EXCAVATING INC	Hispanic Americans	M	WisDOT	18-Apr	DBE
A & E Enterprise Management, LLC	Black Americans	F	Milwaukee County	30-May	DBE
A and L Construction, LLC	Black Americans	M	WisDOT	26-Sep	DBE
A National Limousine Service, Inc.	Black Americans	M	Milwaukee County	16-Aug	DBE
A. J. Wholesale Produce, Inc.	Caucasian	F	Milwaukee County	26-Sep	DBE
A. Weinstein & Associates	Caucasian	F	Milwaukee County	21-Mar	ACDBE/DBE
A3 Tech, LLC	Caucasian	F	Milwaukee County	11-Mar	DBE
AAA Engineering, Ltd.	Caucasian	F	WisDOT	1-Nov	DBE
AAS Trucking	Hispanic Americans	M	Milwaukee County	2-May	DBE
ABARI CONSTRUCTION, INC.	Hispanic Americans	M	WisDOT	28-May	DBE
ABAXENT, LLC	Black Americans	F	Milwaukee County	13-Jul	DBE
ABERNATHY CONSULTING LTD	Black Americans	F	Milwaukee County	28-Jun	DBE
Abitua Sewer, Water & Plumbing, Inc.	Hispanic Americans	M	WisDOT	26-May	DBE
Able Access Transportation, LLC	Black Americans	M	Milwaukee County	25-May	DBE
ABRAZO, LLC	Hispanic Americans	F	WisDOT	24-Mar	DBE
Absolute Construction Enterprises	Caucasian	F	WisDOT	16-Mar	DBE
Absolute Technology Law Group, LLC	Caucasian	F	Milwaukee County	23-Feb	DBE
ABT PRODUCTS & SERVICES, LTD.	Caucasian	F	WisDOT	31-Oct	DBE
Accurate Group, Inc.	Asian-Pacific Americans	M	WisDOT	4-Apr	DBE
Adaptive Electrical Controls, Inc.	Hispanic Americans	F	WisDOT	22-Jan	DBE
Advance Construction Builders, LLC	Black Americans	M	Milwaukee County	15-Dec	DBE
Advantage Flooring & Design, LLC	Caucasian	F	Milwaukee County	19-Mar	DBE
AE Harris Roofing, LLC	Black Americans	M	Milwaukee County	9-Aug	DBE
AES Services, Inc.	Subcontinent Asian Americans	M	Milwaukee County	26-Oct	DBE
AFF RESEARCH, LLC	Caucasian	F	WisDOT	3-Apr	DBE
AG CONNORS TRUCKING, LLC	Native Americans	M	WisDOT	27-Sep	DBE
Agency Landscape + Planning, LLC	Caucasian	F	WisDOT	26-Oct	DBE
Aguilar Trucking	Hispanic Americans	M	WisDOT	26-Jan	DBE
Aircraft janitorial services	Black Americans	M	Milwaukee County	7-Dec	DBE
Airport Edge, LLC	Caucasian	F	Milwaukee County	6-Jun	DBE
Airport Safety Management Consultants LLC	Hispanic Americans	M	Milwaukee County	10-Dec	DBE
AJR INDUSTRIAL LAWN & SNOW MAINTENANCE, LLC	Black Americans	M	Milwaukee County	13-Feb	ACDBE/DBE
Akana	Native Americans	M	WisDOT	11-Mar	DBE
Alan's Trucking, LLC	Hispanic Americans	M	WisDOT	30-Nov	DBE
Alex Simply Trucking, LLC	Hispanic Americans	M	Milwaukee County	10-Aug	DBE
ALF Cartage, Inc.	Caucasian	F	Milwaukee County	14-Jul	DBE
All Care Transit, LLC	Black Americans	M	Milwaukee County	17-Mar	DBE
All Phase Contracting, Inc.	Caucasian	F	WisDOT	30-Mar	DBE
All Purpose Trucking, LLC	Black Americans	M	WisDOT	30-Apr	DBE
All Season Lawn Care & Landscaping, Inc.	Black Americans	M	Milwaukee County	29-Mar	DBE
Allcon, LLC	Hispanic Americans	F	Milwaukee County	27-Jul	DBE
All-State Concrete Cutting, Inc.	Asian-Pacific Americans	M	WisDOT	16-Nov	DBE

ALOYSIUS JANITORIAL SERVICES, LLC	Black Americans	F	WisDOT	29-Oct	DBE
AltusWorks, INC.	Caucasian	F	WisDOT	16-Feb	DBE
ALWAYS TOWING & RECOVERY, INC.	Black Americans	M	Milwaukee County	23-Jan	DBE
AM SAFETY, LLC	Hispanic Americans	M	WisDOT	2-Aug	DBE
Amani Accounting & Tax Services, LLC	Black Americans	M	Milwaukee County	29-Mar	ACDBE/DBE
AMC Landscaping	Hispanic Americans	M	Milwaukee County	9-Mar	DBE
American Concrete Restoration, Inc.	Caucasian	F	WisDOT	29-Jan	DBE
American Construction Supplies, Inc.	Caucasian	F	WisDOT	28-Mar	DBE
AMERICAN DESIGN INC	Black Americans	M	Milwaukee County	25-Oct	DBE
American Living, LLC	Native Americans	M	Milwaukee County	22-Mar	DBE
AMERICAN Surveying & Engineering, P.C.	Hispanic Americans	M	WisDOT	27-Oct	DBE
AmeTrade, Inc. dba AmePower	Hispanic Americans	F	Milwaukee County	12-Jun	DBE
Amigo Construction, LLC.	Hispanic Americans	M	City of Madison	6-Apr	DBE
AMRI Counseling Services, LLC	Black Americans	F	Milwaukee County	30-Jun	DBE
AMS Elite Solutions, Inc.	Caucasian	F	Milwaukee County	24-Apr	DBE
ANACorp, LLC	Hispanic Americans	F	Milwaukee County	15-Mar	ACDBE/DBE
ANDERSEN & ANDERSEN TECHNICAL SERVICES, LLC	Caucasian	F	Milwaukee County	31-Dec	DBE
ANDERSON FENCE	Native Americans	M	Milwaukee County	12-Jul	DBE
ANDREA & ORENDORFF, LLP	Caucasian	F	Milwaukee County	12-Jan	DBE
Anna Trucking, Inc.	Asian-Pacific Americans	M	Milwaukee County	7-May	DBE
Anointed Cleaners, LLC	Black Americans	F	Milwaukee County	3-May	DBE
ANTIGUA LATIN RESTAURANT, LLC	Hispanic Americans	F	Milwaukee County	11-Nov	DBE
APEX Business Solutions, LLC DBA Limitless Brand	Black Americans	M	Milwaukee County	8-Oct	ACDBE/DBE
APEX CONSULTING ENGINEERS, LLC	Black Americans	M	WisDOT	10-Jul	DBE
Apple Designs, Inc	Caucasian	F	Milwaukee County	29-Nov	DBE
Applied Controls & Contracting Services, Inc.	Black Americans	M	WisDOT	11-Jan	DBE
APPLIED FLOORING SOLUTIONS, LLC	Caucasian	F	WisDOT	17-Dec	DBE
Araiza Corporation	Hispanic Americans	M	Milwaukee County	27-Jan	DBE
Arbor Green, Inc.	Caucasian	F	WisDOT	20-Jul	DBE
ARC Alternative and Renewable Construction, LLC	Caucasian	F	WisDOT	30-Oct	DBE
Archer Enterprises, LLC	Caucasian	F	Milwaukee County	19-Feb	DBE
ARCHITECTURAL LIGHTING CONSULTANTS	Caucasian	F	Milwaukee County	22-Apr	DBE
Ardent Technologies Inc	Asian-Pacific Americans	M	WisDOT	13-Sep	DBE
Ark Engineering Associates, Ltd.	Subcontinent Asian Americans	M	WisDOT	28-Apr	DBE
Arrow Pavement Maintenance, Inc.	Native Americans	M	WisDOT	23-Dec	DBE
ARROW-CRETE CONSTRUCTION, LLC	Native Americans	M	WisDOT	25-Sep	DBE
ARTEAGA CONSTRUCTION, INC.	Hispanic Americans	M	WisDOT	28-Oct	DBE
Arteaga Landscapes & Erosion Control, LLC	Hispanic Americans	M	WisDOT	26-Feb	DBE
Artisan Consulting Engineers, LLC	Asian-Pacific Americans	M	WisDOT	11-Mar	DBE
ASAP FASTENING SYSTEMS, INC.	Caucasian	F	WisDOT	26-Apr	DBE
Ascend Elevator, LLC	Black Americans	F	Milwaukee County	1-Feb	DBE
ASP Industries, Inc.	Caucasian	F	WisDOT	27-Oct	DBE
ASSEMBLAGE ARCHITECTS	Individual	M	WisDOT	3-Apr	DBE
Asset Recovery Network, LLB DBA Milwaukee Mailing CO.	Black Americans	M	Milwaukee County	4-Mar	DBE
A-STAR CONCRETE PUMPING, INC.	Caucasian	F	WisDOT	30-Apr	DBE
Atlantic Painting Co., Inc.	Caucasian	F	WisDOT	31-Mar	DBE
Atlantic Petroleum & Mineral Resources, Inc.	Black Americans	M	Milwaukee County	28-Feb	DBE
Attorney Pamela D Crawford	Caucasian	F	Milwaukee County	30-Jul	DBE
Aura Fabricators, Inc.	Asian-Pacific Americans	F	WisDOT	29-May	DBE
Avalon Rail, Inc.	Caucasian	F	Milwaukee County	14-Oct	DBE
Avantti Design Group	Asian-Pacific Americans	M	Milwaukee County	16-Dec	DBE
Avia Cakes, LLC	Black Americans	F	Milwaukee County	6-Mar	ACDBE/DBE
AVIATION ALLIANCE, INC	Caucasian	F	WisDOT	6-Dec	DBE
Aviation Security Consulting, Inc.	Caucasian	F	Milwaukee County	29-Sep	DBE
Aviatrix Communications, LLC	Hispanic Americans	F	WisDOT	6-Oct	DBE
Avila's Construction, LLC	Hispanic Americans	M	Milwaukee County	9-Sep	DBE

AVK CONSULTING, INC.	Caucasian	F	WisDOT	31-Mar	DBE
Awesome Cleaning Technicians, LLC	Black Americans	F	WisDOT	3-Mar	DBE
Axiom Actuarial Consulting, LLC	Hispanic Americans	M	Milwaukee County	9-Aug	DBE
Axis Installation, Inc.	Caucasian	F	Milwaukee County	1-Apr	DBE
Aztec Plumbing, LLC	Hispanic Americans	M	Milwaukee County	7-Dec	DBE
B & D CONTRACTORS INC	Native Americans	M	Milwaukee County	14-Oct	DBE
B & R Project Management, Inc.	Caucasian	F	Milwaukee County	15-Sep	DBE
BABBS Engineering Consultants, LLC	Black Americans	M	WisDOT	22-Jun	DBE
Backstrom Trucking	Black Americans	M	Milwaukee County	8-Jun	DBE
BADGER LIGHTING & SIGNS INC	Caucasian	F	WisDOT	11-Mar	DBE
BAF Packaging, LLC	Black Americans	F	Milwaukee County	14-Aug	DBE
Bam Bam Trucking, LLC	Black Americans	F	WisDOT	20-Feb	DBE
Barber Engineering, LLC	Caucasian	F	Milwaukee County	6-Jul	DBE
Barrientos Design & Consulting, Inc.	Hispanic Americans	M	Milwaukee County	15-Jul	DBE
Barry Technologies, Inc.	Black Americans	M	Milwaukee County	10-May	ACDBE/DBE
BASELINE SUPPLY, LLC	Caucasian	F	WisDOT	31-May	DBE
BAY RIDGE CONSULTING	Caucasian	F	Milwaukee County	31-May	DBE
BDP & Associates	Black Americans	F	Milwaukee County	2-Mar	DBE
Beautiful Cleaning, Inc.	Caucasian	F	Milwaukee County	30-Jul	DBE
BEHNKE MATERIALS ENGINEERING, LLC	Caucasian	F	WisDOT	2-Dec	DBE
BELONGER CORPORATION	Native Americans	F	Milwaukee County	10-Feb	DBE
Benford Brown & Associates, LLC	Black Americans	F	Milwaukee County	7-Aug	DBE
BENNIE'S RECYCLING SERVICE	Black Americans	M	Milwaukee County	30-Mar	DBE
Beson & Houle, LLC	Asian-Pacific Americans	M	WisDOT	12-Feb	DBE
Best CCS LLC dba Clearcut Solutions	Black Americans	M	Milwaukee County	7-Jan	DBE
Best Choice Mechanical, LLC	Black Americans	M	Milwaukee County	16-Nov	DBE
Best Ed, LLC	Black Americans	F	Milwaukee County	30-Jun	ACDBE/DBE
Best Erectors Inc.	Caucasian	F	Milwaukee County	16-Dec	DBE
BETH FOY AND ASSOCIATES, LLC	Caucasian	F	WisDOT	20-Jun	DBE
Big Guy Trucking, LLC	Black Americans	M	WisDOT	18-Dec	DBE
BITS & ASSOCIATES, LLC	Hispanic Americans	M	WisDOT	27-Feb	DBE
Black Dog Petroleum, LLC	Asian-Pacific Americans	M	WisDOT	12-May	DBE
Black Spade Training, LLC DBA Black Spade	Black Americans	M	Milwaukee County	30-Jun	DBE
BLM Trucking, LLC	Black Americans	M	WisDOT	29-May	DBE
BLOOM COMPANIES, LLC	Subcontinent Asian Americans	M	WisDOT	3-Nov	DBE
BMC Healthcare IT	Black Americans	F	WisDOT	31-Mar	DBE
BMJ TRUCKING LLC	Hispanic Americans	F	WisDOT	8-Mar	DBE
BMR DESIGN GROUP, INC	Hispanic Americans	M	WisDOT	22-Oct	DBE
BOER ARCHITECTS, INC.	Hispanic Americans	M	Milwaukee County	18-Apr	DBE
BONDED TRANSPORTATION SOLUTIONS, INC.	Caucasian	F	Milwaukee County	14-Oct	DBE
Bowlin Trucking, LLC	Black Americans	M	WisDOT	4-Nov	DBE
Bowman Performance Consulting	Native Americans	F	WisDOT	4-Dec	DBE
Bronner Group, LLC	Caucasian	F	WisDOT	16-Feb	DBE
Brown's Budget Tree Service, LLC	Black Americans	M	WisDOT	19-Jan	DBE
Buddy's Grounds Maint., Inc.	Black Americans	M	WisDOT	6-Jan	DBE
Building Preventative Maintenance Corporation	Black Americans	F	Milwaukee County	3-Feb	DBE
BULLET TRANSIT CO, INC	Caucasian	F	WisDOT	15-Jun	DBE
BULTMAN FINANCIAL SERVICES, INC.	Caucasian	F	Milwaukee County	20-May	DBE
BungeeCraft Corporation	Black Americans	M	Milwaukee County	14-Dec	DBE
BURSE SURVEYING AND ENGINEERING, INC.	Caucasian	F	Milwaukee County	26-Aug	DBE
Business Partners Network, LLC	Black Americans	M	Milwaukee County	17-Mar	DBE
Butler Services, LLC	Black Americans	M	Milwaukee County	12-Mar	DBE
BYCO, INC.	Hispanic Americans	M	Milwaukee County	26-Oct	DBE
C & J Contractors, LLC	Caucasian	F	Milwaukee County	23-Oct	DBE
C & M Construction & Painting LLC	Black Americans	M	Milwaukee County	24-Dec	DBE
C & W Trucking Company of Bayfield	Native Americans	F	WisDOT	12-Mar	DBE

C Renee Consulting and Management Group, LLC	Black Americans	F	Milwaukee County	5-May	DBE
C.A.T. CRISTIENE A TRUCKING, INC.	Caucasian	F	WisDOT	5-Oct	DBE
C.C. Johnson & Malhotra, P.C.	Asian-Pacific Americans	M	WisDOT	1-Oct	DBE
Cade Law, LLC	Black Americans	M	Milwaukee County	12-Oct	DBE
Cal Communications	Hispanic Americans	M	Milwaukee County	31-Aug	DBE
CAMELOT METALS, INC.	Caucasian	F	WisDOT	27-Apr	DBE
Candacity, LLC	Caucasian	F	Milwaukee County	24-Nov	DBE
Canete Medina Consulting Group, INC	Asian-Pacific Americans	F	WisDOT	21-May	DBE
CAPITOL GOVERNMENT CONTRACT SPECIALISTS, INC.	Caucasian	F	WisDOT	7-Aug	DBE
Carlo Lachmansingh Sales, Inc.	Hispanic Americans	M	WisDOT	1-Sep	DBE
Carl's Trucking, LLC	Native Americans	M	WisDOT	17-Aug	DBE
Carolina Construction Supplies, LLC	Caucasian	F	WisDOT	30-Nov	DBE
Cartridge Savers, Inc.	Hispanic Americans	M	Milwaukee County	12-Jun	ACDBE/DBE
Catalystlinks	Caucasian	F	Milwaukee County	22-Jun	DBE
CBS Squared, Inc.	Caucasian	F	WisDOT	30-Jun	DBE
CBUTTS Electric, Inc	Black Americans	M	City of Madison	28-Feb	DBE
CC Consulting Group, LLC	Black Americans	F	Milwaukee County	15-Apr	DBE
CDM CONSULTANTS, LLC	Caucasian	F	WisDOT	16-Nov	DBE
CDR Landscaping & Construction, LLC	Black Americans	M	WisDOT	12-Nov	DBE
Central Painting Inc	Caucasian	F	WisDOT	17-Feb	DBE
CEP ENGINEERING, LLC	Individual	M	WisDOT	2-May	DBE
Certified Contractor, LLC	Black Americans	M	WisDOT	9-Mar	DBE
Cervantes Consulting Engineers, LLC	Asian-Pacific Americans	M	WisDOT	14-Mar	DBE
Chameleon Right-of-Way Services, LLC	Black Americans	F	WisDOT	9-Jul	DBE
Chamness Group	Caucasian	F	Milwaukee County	31-Aug	DBE
CHANDLER & CAMPBELLE INVESTMENT GROUP, LLC	Black Americans	M	WisDOT	29-Jul	DBE
Chandler Campbelle Daschle	Black Americans	M	Milwaukee County	24-Jul	ACDBE/DBE
Charis Facility Advantage, LLC	Black Americans	M	WisDOT	24-Jun	DBE
Chicago Ornamental Iron, Inc.	Hispanic Americans	M	WisDOT	14-Dec	DBE
Chicago Voice and Data Authority Corp.	Hispanic Americans	F	Milwaukee County	6-Dec	ACDBE/DBE
CHIN MANAGEMENT CONSULTING	Asian-Pacific Americans	F	WisDOT	17-Apr	DBE
Circuit Media, LLC	Caucasian	F	WisDOT	13-Jun	DBE
CISCO DISTRIBUTING, LLC	Hispanic Americans	F	WisDOT	29-Apr	DBE
City Wide Transit, Inc.	Caucasian	F	Milwaukee County	13-May	DBE
CK Gates and Associates, LLC	Black Americans	M	Milwaukee County	23-May	DBE
Clark Transportation Consulting & Services, LLC	Black Americans	M	WisDOT	18-Mar	DBE
Clark's Dump Trucking, LLC	Black Americans	F	Milwaukee County	24-Jun	DBE
Class A Cleaning	Black Americans	F	City of Madison	20-Mar	DBE
Clean Rite Supply, Inc.	Caucasian	F	Milwaukee County	2-Mar	DBE
Clear & Fresh Water, Inc.	Black Americans	F	Milwaukee County	9-Sep	DBE
CLK Systems, Inc.	Caucasian	F	Milwaukee County	13-Apr	DBE
Cloud Cover Lawn and Snow Removal	Black Americans	M	WisDOT	10-Jun	DBE
CM SOBCZYK TRUCKING, INC	Caucasian	F	WisDOT	28-Mar	DBE
C-M Transport of Shell Lake, LLC	Caucasian	F	WisDOT	27-May	DBE
CMJ Electric, LLC	Hispanic Americans	M	Milwaukee County	30-Nov	DBE
Coastwise Fireguard, Inc.	Caucasian	F	Milwaukee County	29-May	DBE
Coffee Makes You Black	Black Americans	M	Milwaukee County	21-Oct	ACDBE/DBE
COLDGON PRODUCTS INTERNATIONAL	Native Americans	M	WisDOT	8-Sep	DBE
COLEMAN & WILLIAMS, LTD.	Black Americans	M	Milwaukee County	20-Aug	DBE
COMCENTIA, LLC	Black Americans	M	Milwaukee County	20-Oct	DBE
Comer Capital Group, LLC	Black Americans	M	Milwaukee County	5-Nov	DBE
Community Design Group, Inc.	Hispanic Americans	M	WisDOT	16-Feb	DBE
COMMUNITY ENGINEERING BUILDING SERV	Black Americans	M	Milwaukee County	10-Mar	DBE
Community Traffic Control, LLC	Black Americans	M	Milwaukee County	3-Apr	DBE
Company B Brand Marketing LLC dba B&Co	Caucasian	F	Milwaukee County	11-Feb	DBE
COMPASS SOLUTIONS, LLC	Black Americans	M	WisDOT	13-Sep	DBE

COMPLETE HEALTH, ENV, & SAFETY SERVICES, INC	Caucasian	F	WisDOT	24-Sep	DBE
Compmerca, LLC	Black Americans	M	Milwaukee County	28-Aug	DBE
CON-COR COMPANY, INC	Caucasian	F	WisDOT	22-Jan	DBE
Conin Contractor Services, Inc.	Hispanic Americans	M	WisDOT	27-Aug	DBE
Connetics Transportation Group, Inc.	Asian-Pacific Americans	F	WisDOT	25-Sep	DBE
Connico Incorporated	Caucasian	F	WisDOT	5-Dec	DBE
Construction ASAP, LLC	Caucasian	F	Milwaukee County	27-Oct	DBE
Construction Recruiters America Staffing, Inc.	Caucasian	F	WisDOT	11-Jan	DBE
Construction Services of Milwaukee, LLC	Caucasian	F	Milwaukee County	2-Mar	DBE
CONSULTANTS UNLIMITED	Caucasian	F	Milwaukee County	14-Oct	ACDBE/DBE
COORDINATED CONSTRUCTION PROJECT CONTROL SERVICES, LLC	Caucasian	F	WisDOT	20-Jan	DBE
Corbitt Trucking, LLC	Black Americans	M	Milwaukee County	29-Oct	DBE
Cordill Solutions, LLC	Caucasian	F	Milwaukee County	2-Oct	DBE
CORNISH, ZACK, HILL & ASSOCIATES, INC	Caucasian	F	WisDOT	31-May	DBE
Cotter Consulting, Inc.	Caucasian	F	WisDOT	21-Apr	DBE
Country World Productions, Inc DBA US Captioning Co	Caucasian	F	WisDOT	15-Jan	DBE
Courtland, LLC	Caucasian	F	WisDOT	15-May	DBE
Crawford Evaluation Group, LLC	Native Americans	M	Milwaukee County	25-Aug	DBE
CRB Corporation, Inc.	Caucasian	F	WisDOT	7-Jul	DBE
CREAM CITY MARKETING	Caucasian	F	WisDOT	4-Dec	DBE
Created to Clean	Black Americans	M	Milwaukee County	15-Jul	DBE
CREATIVE BRICK AND CONCRETE	Caucasian	F	WisDOT	25-Jun	DBE
CREATIVE GRAPHIC IMAGING, LLC	Caucasian	F	Milwaukee County	28-Apr	ACDBE/DBE
Cristina Foods, Inc.	Hispanic Americans	M	Milwaukee County	9-Apr	DBE
Crobar Logistics, LLC	Black Americans	M	WisDOT	14-Sep	DBE
CROSS MANAGEMENT SERVICES, INC.	Black Americans	F	City of Madison	31-Mar	DBE
CROSS-SPECTRUM ACOUSTICS INC.	Black Americans	M	WisDOT	7-May	DBE
CROWLEY CONSTRUCTION CORP	Caucasian	F	WisDOT	28-Sep	DBE
Crowley Engineering, LLC	Black Americans	M	WisDOT	29-Dec	DBE
Crudup's Construction, LLC	Black Americans	F	Milwaukee County	17-Jan	DBE
Crump Law Firm, LLC	Black Americans	M	Milwaukee County	2-Mar	DBE
Crush Meets Bevs, the Girls, Meets Curls	Black Americans	F	Milwaukee County	27-Apr	DBE
Cruz Landscape Co.	Hispanic Americans	M	Milwaukee County	14-Oct	DBE
Cruz Trucking and Grading	Hispanic Americans	M	WisDOT	13-Feb	DBE
CS Trucking, LLC	Asian-Pacific Americans	M	WisDOT	29-May	DBE
CSW Funding LLC	Black Americans	F	WisDOT	21-Oct	DBE
CT ENTERPRISE OF SAND CREEK, LLC	Native Americans	M	WisDOT	30-Dec	DBE
Custom Service Plastics, Inc.	Asian-Pacific Americans	F	Milwaukee County	28-May	DBE
Cylvale, LLC	Black Americans	M	Milwaukee County	15-Mar	ACDBE/DBE
Cynthia M. Stiles, RPA	Caucasian	F	WisDOT	14-May	DBE
Cynthia Qualich LLC	Caucasian	F	Milwaukee County	11-Jan	DBE
CZAPLICKI LOPEZ, PLLC	Hispanic Americans	M	WisDOT	26-Sep	DBE
D & G Insulation Inc	Caucasian	F	Milwaukee County	24-Oct	DBE
D & H Family Trucking, LLC	Black Americans	F	WisDOT	24-Jun	DBE
D & M Express of Wisconsin	Caucasian	F	WisDOT	4-Jan	DBE
D & V Trucking LLC (Milwaukee)	Black Americans	F	WisDOT	12-Feb	DBE
D Best Masonry	Black Americans	M	Milwaukee County	5-Dec	DBE
D K CONTRACTORS, INC.	Caucasian	F	Milwaukee County	29-Oct	DBE
D&K WELDING SERVICES, INC.	Black Americans	F	WisDOT	31-Oct	DBE
D2K Traffic Safety, inc.	Native Americans	M	WisDOT	30-Jun	DBE
Daddy's Soul Food & Grille, LLC	Black Americans	M	Milwaukee County	25-Jul	ACDBE/DBE
Dairyland Energy Solutions, Inc.	Hispanic Americans	M	Milwaukee County	28-Jul	DBE
DAMA CONSULTANTS, INC.	Black Americans	M	WisDOT	22-Dec	DBE
Dan Brown Trucking, LLC	Native Americans	M	WisDOT	20-Jul	DBE
Daunen Analytics	Caucasian	F	Milwaukee County	4-Jun	DBE
David Jr's Trucking, LLC	Hispanic Americans	M	WisDOT	31-Mar	DBE

David Thomas Trucking, LLC	Black Americans	M	Milwaukee County	5-Jul	DBE
DAVIDSON TRUCKING, INC. DBA DAVIDSON CONSTRUCTION SUPPLY	Caucasian	F	WisDOT	30-Jun	DBE
Davis Freight Management Inc.	Caucasian	F	WisDOT	7-Jun	DBE
DBA Trucking Inc.	Subcontinent Asian Americans	M	Milwaukee County	4-Mar	DBE
DBE Consulting, LLC	Black Americans	F	Milwaukee County	31-Jul	ACDBE/DBE
DCN TRUCKING LLC	Black Americans	M	Milwaukee County	30-Jul	DBE
DDE, INC. DBA GENERATION CABLE CORP.	Caucasian	F	WisDOT	9-May	DBE
DE VOR COMMUNICATIONS, LLC	Caucasian	F	WisDOT	16-Dec	DBE
DEAN ENTERPRISES, LLC	Caucasian	F	WisDOT	19-Jun	DBE
DEB Corning Interiors, LLC	Caucasian	F	City of Madison	29-Mar	DBE
Dekoven Enterprises, LLC	Black Americans	M	Milwaukee County	24-May	DBE
Delau Contracting Group, LLC	Asian-Pacific Americans	M	WisDOT	27-Mar	DBE
Departure Media, Inc.	Caucasian	F	Milwaukee County	18-May	ACDBE/DBE
DES Wholesale, LLC dba Diversified Energy Supply	Caucasian	F	Milwaukee County	19-Feb	ACDBE/DBE
Design 4U	Black Americans	M	Milwaukee County	30-Sep	DBE
Designer's Landscaping, LLC	Black Americans	M	Milwaukee County	15-Sep	DBE
Designs Touch, LLC	Subcontinent Asian Americans	M	Milwaukee County	15-Oct	DBE
Destree Design Architects, Inc.	Caucasian	F	WisDOT	15-Jun	DBE
DF Express, LLC dba La Boutique	Hispanic Americans	F	Milwaukee County	3-Oct	ACDBE/DBE
Diamond Discs International, LLC.	Black Americans	M	WisDOT	13-Jun	DBE
Dikita Enterprises, Inc.	Black Americans	M	Milwaukee County	21-Jun	DBE
Dis/Vet Enterprises, Inc.	Caucasian	F	Milwaukee County	13-Jan	DBE
Diverse Community Investments, LLC	Black Americans	M	Milwaukee County	22-Jul	DBE
Diversified Technology, Inc.	Black Americans	M	WisDOT	31-Aug	DBE
Divine Destinies Life Skills & Educational Training	Black Americans	F	Milwaukee County	22-May	DBE
DJ'S PLASTERING	Black Americans	M	Milwaukee County	19-Dec	DBE
DLH Consulting, LLC	Caucasian	F	WisDOT	20-Feb	DBE
DMD Consulting, LLC	Caucasian	F	WisDOT	28-Aug	DBE
DMS TRANSPORTATION, LLC	Black Americans	M	WisDOT	17-Feb	DBE
DND Electric Inc	Hispanic Americans	M	WisDOT	31-Mar	DBE
Document Imaging of St. Louis, Inc.	Black Americans	F	WisDOT	21-Dec	DBE
Dolce Burns	Native Americans	M	Milwaukee County	22-May	DBE
DOLSON, INC.	Native Americans	F	WisDOT	1-Apr	DBE
Dominion Behavioral Health Services, LLC	Black Americans	F	Milwaukee County	30-Aug	DBE
Dorschner Associates, Inc.	Caucasian	F	City of Madison	17-Mar	DBE
DOUBLE D LANDSCAPE, LLC	Caucasian	F	WisDOT	27-Jan	DBE
DOUBLE K, INC.	Caucasian	F	WisDOT	14-Jul	DBE
DSR Group, LLC	Black Americans	M	WisDOT	23-Mar	DBE
DURABLE CONTRACT SERVICES, INC.	Black Americans	M	Milwaukee County	23-Jan	ACDBE/DBE
Duwe Metal Products, Inc.	Caucasian	F	WisDOT	18-Jan	DBE
Dynamic Contractors & Consulting, LLC	Black Americans	M	Milwaukee County	20-Oct	DBE
E & G Trucking, LLC	Caucasian	F	WisDOT	10-Feb	DBE
E & K Retail Airport Concessionaire, LLC	Black Americans	M	Milwaukee County	6-Dec	ACDBE/DBE
E & K Retail Inc.	Black Americans	M	Milwaukee County	13-Aug	DBE
E.J. Meyer Trucking	Caucasian	F	Milwaukee County	13-Nov	DBE
Easley's Construction, LLC	Black Americans	M	Milwaukee County	17-Jul	DBE
Eaton Asphalt Service, Inc.	Black Americans	F	Milwaukee County	3-Apr	DBE
ECLIPSE CONTROLS, INC.	Black Americans	M	Milwaukee County	13-Jun	DBE
ECOLOGICAL SERVICES OF MILWAUKEE, INC.	Caucasian	F	WisDOT	12-Apr	DBE
Edra Trucking, LLC	Caucasian	F	Milwaukee County	6-Jan	DBE
EFH Trucking, LLC	Hispanic Americans	F	Milwaukee County	29-Apr	DBE
EJO Ventures	Black Americans	M	Milwaukee County	24-Oct	ACDBE/DBE
Electrical Solutions by RP, LLC	Black Americans	M	Milwaukee County	17-Jan	DBE
Electrical Testing Solutions, Inc.	Hispanic Americans	M	Milwaukee County	19-Feb	DBE
Electrical Testing Solutions, Inc.	Hispanic Americans	M	Milwaukee County	22-Sep	DBE
Elite Professionals, LLC.	Caucasian	F	WisDOT	21-Sep	DBE

Ellis Engineering & Construction Management, LLC	Black Americans	M	Milwaukee County	16-Mar	DBE
EMERALD CITY TILE INC.	Caucasian	F	WisDOT	5-Nov	DBE
Emerging Music Entertainment	Black Americans	M	Milwaukee County	16-Feb	ACDBE/DBE
EMILE BANKS & ASSOCIATES, LLC	Black Americans	M	Milwaukee County	28-Apr	DBE
Eminence Group, LLC	Black Americans	F	WisDOT	2-Mar	DBE
Empowerment Enterprise, LLC	Black Americans	F	Milwaukee County	25-Apr	DBE
Engineering Services Group, Inc.	Black Americans	M	WisDOT	4-Aug	DBE
Enjoi Transportation, LLC	Black Americans	M	Milwaukee County	15-Feb	DBE
ENSERV ENTERPRISES, INC.	Asian-Pacific Americans	M	Milwaukee County	6-Dec	DBE
ENV Property Solutions, LLC	Native Americans	F	WisDOT	9-May	DBE
EP Acquisition, Inc. dba H & B Elevators	Black Americans	M	Milwaukee County	14-Jul	DBE
Epicus, LLC	Caucasian	F	WisDOT	25-Jan	DBE
EPN Trucking, LLC	Subcontinent Asian Americans	M	Milwaukee County	9-Apr	DBE
Equity Supply Group, LLC	Black Americans	M	Milwaukee County	26-Sep	DBE
ER ABERNATHY INDUSTRIAL, INC.	Black Americans	F	Milwaukee County	1-Aug	DBE
Erosion Blue, LLC	Caucasian	F	WisDOT	14-Sep	DBE
ESP Enterprises, Inc.	Hispanic Americans	M	WisDOT	31-Oct	DBE
E-Squared Consulting Corporation	Black Americans	M	WisDOT	18-Dec	DBE
Essential Asset Solutions, LLC	Black Americans	M	Milwaukee County	6-May	DBE
Essnova Solutions, Inc.	Subcontinent Asian Americans	M	Milwaukee County	23-Aug	DBE
Everlights, Inc.	Caucasian	F	WisDOT	11-May	DBE
EVP Construction, LLC	Black Americans	M	Milwaukee County	2-Aug	DBE
EVS, Inc.	Asian-Pacific Americans	M	WisDOT	13-Jul	DBE
Excel Disposal, LLC	Caucasian	F	WisDOT	6-Aug	DBE
Excelle Employment Solutions, Inc.	Black Americans	F	Milwaukee County	2-Mar	DBE
Executive Commercial Cleaning LLC	Black Americans	M	Milwaukee County	13-Jan	DBE
Express Insulation, Inc.	Caucasian	F	Milwaukee County	15-Sep	DBE
F Mora Trucking	Hispanic Americans	M	Milwaukee County	5-Jul	DBE
Faith Group, LLC	Caucasian	F	Milwaukee County	2-Mar	ACDBE/DBE
Farmer's Basket Perimeter, Inc.	Asian-Pacific Americans	F	Milwaukee County	21-Sep	ACDBE/DBE
FCO Trucking, LLC	Hispanic Americans	M	Milwaukee County	14-Jun	DBE
February Enterprises, Inc.	Hispanic Americans	M	Milwaukee County	20-Feb	DBE
Financial Integrity Resources Management, LLC	Black Americans	M	Milwaukee County	31-Jul	DBE
Fire & Ice Contracting, LLC	Caucasian	F	Milwaukee County	7-Jun	DBE
First Choice Supply, Inc.	Black Americans	F	Milwaukee County	2-Mar	ACDBE/DBE
First Class Concessions, Inc.	Asian-Pacific Americans	F	Milwaukee County	25-Nov	DBE
FIRSTWORLD USA, INC. DBA TERMINAL EXCHANGE	Asian-Pacific Americans	M	Milwaukee County	13-Dec	DBE
FISCHBACH, INC	Caucasian	F	WisDOT	20-Feb	DBE
FITZGERALD & HALLIDAY, INC.	Caucasian	F	WisDOT	4-Jan	DBE
FIVE23 GROUP, INC. DBA LUMENOR CONSULTING GROUP	Caucasian	F	WisDOT	17-Mar	DBE
FLENKER LAND ARCHITECTURE CONSULTANTS, LLC	Caucasian	F	WisDOT	24-Jun	DBE
Flores Contractors, Inc.	Hispanic Americans	M	WisDOT	8-Mar	DBE
FLYING C TRANSPORTATION, LLC	Caucasian	F	WisDOT	22-Nov	DBE
Flying Leap, Inc.	Caucasian	F	Milwaukee County	18-Mar	ACDBE/DBE
Flying Retail, LLC dba Flying Concessions	Hispanic Americans	M	Milwaukee County	7-Mar	ACDBE/DBE
Four Seasons Property Management	Caucasian	F	Milwaukee County	7-Feb	DBE
Foursquare Integrated Transportation Planning, Inc.	Caucasian	F	WisDOT	13-May	DBE
Foust Foundations, Inc.	Caucasian	F	WisDOT	14-Aug	DBE
Franco Trucking, LLC	Hispanic Americans	M	WisDOT	10-Mar	DBE
Franklin Trucking Inc	Caucasian	F	Milwaukee County	8-Sep	DBE
FRED'S ORNAMENTAL DOOR, LLC	Black Americans	M	Milwaukee County	3-Jan	DBE
Freedom sky Technologies, LLC	Hispanic Americans	M	Milwaukee County	7-Aug	DBE
FRESH WATER ENGINEERING, LLC	Caucasian	F	WisDOT	11-Jun	DBE
Fresher, LLC	Black Americans	F	Milwaukee County	1-Mar	ACDBE/DBE
Fuertoski Trucking, LLC	Hispanic Americans	F	Milwaukee County	31-Jan	DBE
Fusion Integrated Solutions, LLC	Black Americans	M	Milwaukee County	19-Sep	DBE

FWA TRANSPORT, LLC	Caucasian	F	WisDOT	14-Nov	DBE
G. Moxie, Inc.	Caucasian	F	Milwaukee County	1-Apr	ACDBE/DBE
G.W. Peoples Contracting Co., Inc.	Black Americans	M	WisDOT	13-Oct	DBE
G5 Tek Solutions, LLC	Caucasian	F	Milwaukee County	15-Dec	DBE
GALLOP CORPORATION	Asian-Pacific Americans	M	WisDOT	30-Aug	DBE
GANDHI AND ASSOCIATES, INC	Asian-Pacific Americans	M	WisDOT	21-Sep	DBE
GAT Supply Inc	Caucasian	F	WisDOT	16-Jun	DBE
GAYTON ENTERPRISES, LLC	Hispanic Americans	M	WisDOT	8-May	DBE
Geek Dreams, Inc.	Black Americans	M	Milwaukee County	3-Apr	DBE
Gee's Trucking, LLC	Black Americans	M	Milwaukee County	20-Oct	DBE
General Welding Corporation	Asian-Pacific Americans	M	Milwaukee County	12-Apr	DBE
GEORGE HARRIS TRUCKING	Black Americans	M	Milwaukee County	24-Sep	DBE
GEORGIE TRANSPORT, INC.	Caucasian	F	Milwaukee County	15-Nov	DBE
GESTRA ENGINEERING, INC	Asian-Pacific Americans	M	WisDOT	30-Jun	DBE
GETTIN' DIRTY CLEANING SERVICES, LLC	Black Americans	F	Milwaukee County	28-Jun	DBE
GIA GROUP	Black Americans	M	WisDOT	26-Nov	DBE
Gibraltar Industries, Inc	Black Americans	F	WisDOT	7-Oct	DBE
GIBRALTAR LANDSCAPE	Hispanic Americans	M	WisDOT	15-Jun	DBE
Gill Trucking Inc	Subcontinent Asian Americans	M	Milwaukee County	22-Jan	DBE
GLADYS R. WILSON & ASSOCIATES, P.C.	Hispanic Americans	F	Milwaukee County	10-Jun	DBE
Global Capital Group, LLC	Black Americans	M	Milwaukee County	20-Nov	DBE
Global Gateway Concessionaires North America	Black Americans	M	Milwaukee County	28-Jul	ACDBE/DBE
Global Janitors Inc	Black Americans	M	WisDOT	12-Feb	DBE
Global Lounge Network, LLC	Hispanic Americans	M	Milwaukee County	15-Mar	ACDBE/DBE
Godoy Trucking, LLC	Hispanic Americans	M	Milwaukee County	10-Aug	DBE
GOLDEN UNICORN, INC.	Black Americans	M	Milwaukee County	18-Feb	DBE
Gonzalez E. LLC	Hispanic Americans	M	Milwaukee County	26-Jul	DBE
Goodwille Pierre, LLC	Black Americans	M	Milwaukee County	16-Jan	ACDBE/DBE
Gordon Solutions, LLC	Native Americans	M	WisDOT	29-Jul	DBE
Gorman Trucking, LLC.	Black Americans	M	WisDOT	9-Mar	DBE
GP Trucking, Inc.	Black Americans	F	Milwaukee County	18-Mar	DBE
GRAND STUDIO, INC. DBA GRAND STUDIO PHOTOGRAPHY	Hispanic Americans	M	Milwaukee County	14-Jul	DBE
Great Lakes Facility Management, LLC	Black Americans	M	Milwaukee County	21-Jun	ACDBE/DBE
GREAT LAKES METALS CORPORATION	Caucasian	F	WisDOT	30-Nov	DBE
Great Lakes Power Vac LLC	Caucasian	F	Milwaukee County	4-Sep	DBE
GREENWAY GLOBAL CORPORATION	Black Americans	M	WisDOT	4-Apr	DBE
GROUND EFFECTS OF WI, INC.	Caucasian	F	WisDOT	13-Jan	DBE
Ground Engineering Consultants, Inc.	Asian-Pacific Americans	M	Milwaukee County	14-Apr	DBE
GROWTH, DEVELOPMENT & MARKETING, INC.	Black Americans	M	WisDOT	6-Mar	DBE
GSI Janitorial & Building Maintenance, LLC	Black Americans	M	Milwaukee County	28-Aug	DBE
GT Private Detective Agency, LLC	Black Americans	M	Milwaukee County	30-Dec	DBE
Guins Trucking, LLC	Hispanic Americans	F	Milwaukee County	16-Jul	DBE
Guytec Steel, Inc.	Subcontinent Asian Americans	M	WisDOT	30-Jan	DBE
Habermehl Electric, Inc.	Caucasian	F	WisDOT	23-Nov	DBE
HAFCO Services Inc.	Hispanic Americans	M	WisDOT	21-Apr	DBE
HAIRSTON TRUCKING	Black Americans	M	WisDOT	3-Apr	DBE
Hall Quality Construction, LLC	Black Americans	M	Milwaukee County	12-Sep	DBE
HALL TRUCKING	Caucasian	F	WisDOT	12-May	DBE
Hall, Burce & Olson, S.C.	Black Americans	M	Milwaukee County	22-Apr	DBE
Hands on Science Demos Inc.	Black Americans	M	Milwaukee County	16-Aug	DBE
Hanno Weber & Associates	Hispanic Americans	M	WisDOT	16-Aug	DBE
Hanson Custom Crushing, Inc.	Caucasian	F	WisDOT	18-May	DBE
Hard Rock Sawing & Drilling Specialist Co.	Native Americans	F	WisDOT	16-May	DBE
HARDLINES DESIGN COMPANY	Asian-Pacific Americans	F	WisDOT	7-Apr	DBE
Harkinson Consulting, LLC	Caucasian	F	WisDOT	18-May	DBE
Harris Miller Miller & Hanson, Inc. DBA HMMH, Inc.	Caucasian	F	Milwaukee County	1-Dec	ACDBE/DBE

Harry's Trucking Inc	Asian-Pacific Americans	M	Milwaukee County	28-Jan	DBE
HATA, Inc.	Hispanic Americans	M	Milwaukee County	21-Apr	ACDBE/DBE
Hawk Health & Safety, LLC	Native Americans	M	WisDOT	30-Jun	DBE
HBM Engineering Group, LLC.	Caucasian	F	WisDOT	19-Oct	DBE
HC Insulation, LLC	Hispanic Americans	M	Milwaukee County	2-May	DBE
HC Services, Inc.	Caucasian	F	WisDOT	25-Jun	DBE
HEARTLAND INFORMATION RESEARCH, IN	Asian-Pacific Americans	F	WisDOT	1-Jun	DBE
Heider & Bott Company	Caucasian	F	Milwaukee County	13-Aug	DBE
Helberg Electrical Supply, LLC	Caucasian	F	WisDOT	29-Jan	DBE
Helianthus, LLC	Caucasian	F	Milwaukee County	16-Jul	DBE
Helping Hand Trucking, LLC	Black Americans	F	Milwaukee County	6-Aug	DBE
HERBST OIL, INC.	Caucasian	F	Milwaukee County	23-Mar	ACDBE/DBE
HERITAGE READY MIX, INC.	Black Americans	M	WisDOT	19-Jul	DBE
Hernandez Roofing, LLC	Hispanic Americans	M	Milwaukee County	1-Mar	DBE
Hero Plumbing, Inc.	Black Americans	M	Milwaukee County	26-May	DBE
Hetzel Tile & Marble, Inc.	Caucasian	F	Milwaukee County	30-Jun	DBE
Hetzel-Sanfilippo, Inc.	Caucasian	F	Milwaukee County	13-Aug	DBE
HF Enterprises, LLC	Individual	M	WisDOT	18-Dec	DBE
HIGHWAY CONSTRUCTION PRODUCTS, LLC	Caucasian	F	WisDOT	7-Jan	DBE
HIGHWAY SOLUTIONS	Black Americans	M	WisDOT	9-Apr	DBE
HIMALAYAN CONSULTANTS LLC	Asian-Pacific Americans	M	WisDOT	2-Jul	DBE
Hiram Power Electric	Black Americans	M	WisDOT	27-Mar	DBE
Hofacker Construction Supplies	Caucasian	F	WisDOT	28-Dec	DBE
Hoffman Landscape LLC	Caucasian	F	Milwaukee County	7-Mar	DBE
HOME CARE REALTY	Black Americans	F	Milwaukee County	14-Apr	DBE
Hopkins Mechanical and Design, LLC	Black Americans	M	Milwaukee County	28-Feb	DBE
HOPWOOD MASONRY INC	Black Americans	F	Milwaukee County	13-Jun	DBE
Howard Trucking	Black Americans	M	WisDOT	27-Feb	DBE
HP Construction Services, LLC	Hispanic Americans	M	Milwaukee County	23-Nov	DBE
HR CONSULTANTS, INC.	Caucasian	F	WisDOT	31-Aug	DBE
HRV Conformance Verification Associates, Inc.	Caucasian	F	WisDOT	1-Oct	DBE
Hudson Performance Group, Inc.	Black Americans	M	Milwaukee County	2-Apr	DBE
HURT ELECTRIC, INC.	Black Americans	M	Milwaukee County	18-Apr	DBE
HURTADO ZIMMERMAN S.C.	Caucasian	F	Milwaukee County	7-Oct	DBE
HVA PRODUCTS, INC	Asian-Pacific Americans	M	Milwaukee County	11-Dec	DBE
IBC ENGINEERING SERVICES INC	Caucasian	F	Milwaukee County	22-Sep	DBE
Ideal Homes Inc	Caucasian	F	Milwaukee County	4-Nov	DBE
ILJ Milwaukee, LLC	Caucasian	F	Milwaukee County	3-Nov	ACDBE/DBE
Illuminative Strategies, Inc.	Caucasian	F	WisDOT	29-Jan	DBE
IMEX CARGO, LLC	Caucasian	F	WisDOT	3-Aug	DBE
Imurac Trucking, LLC	Hispanic Americans	M	WisDOT	30-Jun	DBE
In & Out Trucking LLC	Black Americans	M	Milwaukee County	12-Nov	DBE
Independent Public Advisors, LLC	Black Americans	F	Milwaukee County	20-Oct	DBE
Industry Trucking, LLC	Black Americans	M	WisDOT	27-Oct	DBE
Ingraham Technical Services Inc.	Caucasian	F	WisDOT	30-Sep	DBE
Innova Technologies, Inc.	Hispanic Americans	M	WisDOT	3-Aug	DBE
INSULATION TECHNOLOGIES, INC.	Hispanic Americans	M	Milwaukee County	26-Feb	DBE
INTEGRATED PROJECT CONTROLS, LLC	Hispanic Americans	M	WisDOT	26-Jun	DBE
Integration Gealing Alivio Integrtal	Hispanic Americans	M	Milwaukee County	26-Oct	DBE
Intelistep, LLC	Caucasian	F	Milwaukee County	3-Dec	DBE
INTELLECTUAL CONCEPTS, LLC	Black Americans	F	WisDOT	26-Jul	DBE
Interactive Design, Inc.	Black Americans	F	Milwaukee County	28-May	DBE
INTERRA, Inc.	Asian-Pacific Americans	M	WisDOT	26-Nov	DBE
INTERSTATE SEALANT & CONCRETE, INC.	Caucasian	F	WisDOT	18-Mar	DBE
Ironwood Drive Financial Group, LLC	Black Americans	M	Milwaukee County	10-Oct	DBE
Islas Trucking, LLC	Hispanic Americans	M	Milwaukee County	19-May	DBE

Ivan's Trucking	Hispanic Americans	M	Milwaukee County	9-Aug	DBE
iVision Solutions, Inc.	Asian-Pacific Americans	M	Milwaukee County	2-Mar	DBE
J & J United Industries, LLC	Black Americans	M	Milwaukee County	2-Mar	DBE
J C TRIPLETT AND SONS MOVING	Black Americans	M	Milwaukee County	16-Mar	DBE
J. THOMPSON & ASSOCIATES, LLC	Black Americans	M	Milwaukee County	22-Mar	DBE
J. W. Johnson & Associates, Inc.	Native Americans	M	WisDOT	21-Jun	DBE
J. W. Transportation, L.L.C.	Black Americans	M	Milwaukee County	25-May	DBE
J.A. Watts, Inc.	Caucasian	F	WisDOT	17-Aug	DBE
J.E.M.S. ENTERPRISES OF MADISON LLC	Black Americans	M	Dane County	16-Feb	ACDBE/DBE
JACOBS/Ryan ASSOCIATES	Caucasian	F	Milwaukee County	25-Oct	DBE
Jacobsen Daniels Associates, LLC	Black Americans	M	Milwaukee County	14-Aug	DBE
Jahnkes & Jahnkes Associates, LLC	Subcontinent Asian Americans	M	Milwaukee County	6-Sep	DBE
James Curtis Legal Services, LLC. DBA James Curtis Group	Black Americans	F	Milwaukee County	15-Oct	DBE
Jaramillo Contractors Inc.	Hispanic Americans	M	WisDOT	7-Mar	DBE
Jazfam Associates, Inc	Caucasian	F	Milwaukee County	27-Apr	ACDBE/DBE
JCCOB, Smith, Gardner, Smith, Inc. dba Keystone Travel Services	Black Americans	M	Milwaukee County	1-Nov	DBE
JCM & ASSOCIATES, INC. dba Blue Goose Uniforms	Hispanic Americans	M	Milwaukee County	26-Mar	ACDBE/DBE
JCM1, LLC	Black Americans	M	WisDOT	26-Jul	DBE
JCP CONSTRUCTION, LLC	Black Americans	M	Milwaukee County	28-Apr	ACDBE/DBE
JDF Enterprises, Inc	Black Americans	M	Milwaukee County	30-Jun	ACDBE/DBE
Jericho Resources, Inc.	Black Americans	M	Milwaukee County	2-Mar	DBE
Jeta Corporation	Native Americans	F	WisDOT	8-Jun	DBE
Jizzles Sandwhich Shop, LLC	Black Americans	M	Milwaukee County	31-May	ACDBE/DBE
JLA & Sons Construction Company	Hispanic Americans	M	WisDOT	5-May	DBE
JLS Truckin', LLC	Hispanic Americans	M	Milwaukee County	15-Nov	DBE
JM & Associates	Hispanic Americans	M	Milwaukee County	2-Jan	ACDBE/DBE
JMS COMMUNICATIONS & RESEARCH	Caucasian	F	WisDOT	26-Apr	DBE
Johnson Operating Services, LLC	Caucasian	F	WisDOT	15-Apr	DBE
Johnson Research Group, Inc.	Caucasian	F	Milwaukee County	4-Apr	DBE
JORDAN TRUCKING NO2	Native Americans	M	WisDOT	26-May	DBE
Jordim International, Inc.	Hispanic Americans	F	WisDOT	25-Jul	DBE
Jo-Terr Property Management	Black Americans	F	Milwaukee County	26-Sep	DBE
JR'S CONSTRUCTION & LANDSCAPING, INC.	Black Americans	M	WisDOT	1-Apr	DBE
J-Tec Metal Products, Inc.	Hispanic Americans	M	Milwaukee County	12-Jan	DBE
JTM CONCEPTS, INC.	Asian-Pacific Americans	F	WisDOT	21-Oct	DBE
Justin Hwa & Associates, LLC	Asian-Pacific Americans	M	WisDOT	31-Jul	DBE
J-Wise Trucking, LLC	Black Americans	F	WisDOT	31-Jul	DBE
K LYNN CLEANING	Caucasian	F	Milwaukee County	29-Sep	DBE
K. SINGH & ASSOCIATES	Asian-Pacific Americans	M	WisDOT	14-Oct	DBE
K.A.N.E.S. Trucking, LLC	Black Americans	M	Milwaukee County	3-May	DBE
K.L.I., Inc	Asian-Pacific Americans	F	WisDOT	18-Aug	DBE
KADILEX CONSTRUCTION, INC.	Black Americans	M	WisDOT	3-Aug	DBE
Kairo Communications	Black Americans	F	Milwaukee County	15-Jun	DBE
KALGen Consultants, Inc	Asian-Pacific Americans	M	WisDOT	14-Dec	DBE
Kane Communications Group, LLC	Caucasian	F	Milwaukee County	16-Oct	DBE
KAREN PAULSON TRUCKING INC	Caucasian	F	Dane County	12-May	DBE
KAREN'S TRUCKING LLC	Caucasian	F	WisDOT	29-Sep	DBE
Kaskaskia Engineering Group, LLC	Caucasian	F	WisDOT	6-Jan	DBE
Kennedy Construction Management, LLC	Black Americans	M	Milwaukee County	13-Jul	DBE
KERRY ENGINEERING, INC.	Black Americans	M	Milwaukee County	28-Nov	DBE
Ketchum Professional Resources, LLC	Caucasian	F	WisDOT	17-Jan	DBE
Keystone Exterior Finishes, LLC	Caucasian	F	Milwaukee County	6-Mar	DBE
KFH GROUP, INC	Caucasian	F	WisDOT	25-Mar	DBE
KG FAMILY INVESTMENT	Black Americans	M	WisDOT	16-Oct	DBE
Kim Construction Company, Inc.	Caucasian	F	WisDOT	12-Jan	DBE
KIM KENVILLE CONSULTING	Caucasian	F	WisDOT	14-Aug	DBE

KL ENGINEERING, INC	Caucasian	F	WisDOT	27-Nov	DBE
Knowledge Architects, LLC	Black Americans	F	WisDOT	17-Aug	DBE
KOPPA GROUP, LLC	Caucasian	F	WisDOT	2-Jun	DBE
KOPPEL FABRICATION, INC.	Caucasian	F	WisDOT	2-Nov	DBE
KOWALSKI TRUCKING	Caucasian	F	WisDOT	5-Jun	DBE
Kraly Solutions, LLC	Caucasian	F	Milwaukee County	28-Sep	DBE
Kramer Associates, Inc. dba Kramer Aerotek, Inc.	Caucasian	F	Milwaukee County	13-Jan	ACDBE/DBE
Kristine Fallon Associates, Inc	Black Americans	M	Milwaukee County	28-Feb	DBE
KSK FINANCE AND MANAGEMENT SERVICES, INC.	Caucasian	F	WisDOT	29-Aug	DBE
KSO Metalfab, Inc.	Caucasian	F	WisDOT	26-Oct	DBE
KSS ASSOCIATES	Asian-Pacific Americans	M	Milwaukee County	24-Aug	DBE
K-Wood Truss Rafters, Inc.	Caucasian	F	WisDOT	12-Aug	DBE
L F Green Development, LLC	Caucasian	F	Milwaukee County	24-Feb	DBE
L. Burns Industries, Co.	Black Americans	M	Milwaukee County	28-Mar	DBE
LaBrant & Associates, LLC	Caucasian	M	Milwaukee County	24-Jul	DBE
Lac Courte Oreilles Development Corp.	Native Americans	M	WisDOT	4-Sep	DBE
Lady Justice Inc.	Black Americans	F	Milwaukee County	24-Jul	DBE
Lakeside Engineers, LLC	Caucasian	F	WisDOT	23-Feb	DBE
Lalor Land Services, LLC	Caucasian	F	WisDOT	16-Jun	DBE
Lambent Risk Management, Inc.	Black Americans	F	Milwaukee County	8-Jan	DBE
LANDRY CONSULTING LLC	Caucasian	F	WisDOT	2-Dec	DBE
LARRY CHINN ENTERPRISES, INC.	Black Americans	M	Milwaukee County	9-Feb	DBE
Laster & Holliman Plumbing, LLC	Black Americans	M	Milwaukee County	27-Dec	DBE
LAUREL & ASSOCIATES LTD	Caucasian	F	Dane County	8-May	DBE
LB Consulting Services, LLC	Caucasian	F	Milwaukee County	30-Jun	DBE
LEDEN'S TRUCKING INC.	Black Americans	M	WisDOT	3-Sep	DBE
LEE REYNOLDS SERVICES, LLC	Caucasian	M	Milwaukee County	9-Jun	DBE
Legacy Architecture, inc.	Caucasian	F	WisDOT	28-Feb	DBE
Legacy Building Maintenance, Inc.	Black Americans	F	Milwaukee County	16-Jul	DBE
Legacy Concessions, LLC	Black Americans	M	Milwaukee County	14-Feb	ACDBE/DBE
Legend, LLC	Hispanic Americans	M	WisDOT	27-May	DBE
LeJeune and Associates, LLC	Black Americans	M	Milwaukee County	8-Mar	ACDBE/DBE
Leonard & Finco Public Relations Inc.	Caucasian	F	WisDOT	1-Sep	DBE
LESLIE SAUNDERS INSURANCE AGENCY INC	Caucasian	F	Milwaukee County	9-Mar	ACDBE/DBE
LEVEL-1 GLOBAL SOLUTIONS, LLC	Black Americans	M	WisDOT	27-Jun	DBE
LEWIS CUSTOM BUILT CABINETS	Black Americans	M	City of Madison	7-Feb	DBE
LEYDEN ELECTRIC INC.	Caucasian	F	WisDOT	12-Jan	DBE
Lira Trucking Inc	Hispanic Americans	M	Milwaukee County	8-Aug	DBE
Lisa Kaye Catering, LLC	Black Americans	F	Milwaukee County	11-Feb	DBE
Lobrien Enterprises, Ltd. dba LCL Advisors, Inc.	Caucasian	F	WisDOT	31-May	DBE
Lockly Valuation Services, LLC	Black Americans	M	Milwaukee County	14-Oct	DBE
Longhouse Inventory Solutions, LLC	Caucasian	F	Milwaukee County	6-Aug	ACDBE/DBE
LOUIS COMPANY, LLC	Hispanic Americans	F	WisDOT	9-Feb	DBE
Lowe One Trucking & Hauling, LLC	Black Americans	F	WisDOT	5-May	DBE
LT Leon Associates, Inc.	Hispanic Americans	M	WisDOT	6-Aug	DBE
Luchador1 & Yvette29, LLC; DBA Luchador Trucking	Hispanic Americans	M	Milwaukee County	5-Dec	DBE
Luna Trucking	Hispanic Americans	M	Milwaukee County	26-Jul	DBE
Luxuriant Cleaning Group, LLC	Black Americans	M	Milwaukee County	24-Aug	DBE
Lynch & Associates-Engineering Consultants, LLC	Caucasian	F	WisDOT	15-Dec	DBE
Lyons View Manufacturer & Supply, Inc.	Black Americans	M	WisDOT	7-Dec	DBE
M & E Architects + Engineers, LLC	Black Americans	M	Milwaukee County	7-Nov	DBE
M & J Krueger Trucking LLC	Hispanic Americans	F	Milwaukee County	26-Nov	DBE
M Rodriguez and Son, LLC	Hispanic Americans	M	Milwaukee County	15-Apr	DBE
M Squared Engineering, LLC	Asian-Pacific Americans	F	Milwaukee County	3-Sep	DBE
M. Davis & Company, Inc.	Black Americans	M	WisDOT	17-Feb	DBE
M. Peters Trucking Inc.	Hispanic Americans	M	WisDOT	14-Jan	DBE

M.L. THARPS & ASSOCIATES	Asian-Pacific Americans	M	WisDOT	18-Aug	DBE
MA REBAR SERVICES, INC.	Caucasian	F	WisDOT	30-Dec	DBE
Madd-Ward Trucking	Black Americans	M	WisDOT	27-Jun	DBE
MAGIC MAINTENANCE Inc.	Hispanic Americans	M	Milwaukee County	23-Sep	ACDBE/DBE
Malas Engineering, LLC	Asian-Pacific Americans	M	Milwaukee County	24-Oct	DBE
Maldonado & Morgan, LLC	Hispanic Americans	M	Milwaukee County	15-Jan	DBE
Malleswari, Inc.	Subcontinent Asian Americans	F	Milwaukee County	10-Aug	DBE
Malone's Custom Painting	Black Americans	M	Milwaukee County	10-Feb	DBE
MANAGEMENT DECISION, INC.	Caucasian	F	Milwaukee County	20-Dec	DBE
Manners for Life, LLC	Black Americans	F	WisDOT	2-Apr	DBE
Mariann Noyes Trucking, LLC	Caucasian	F	Milwaukee County	24-May	DBE
MARK II LLC	Black Americans	M	Milwaukee County	24-Mar	ACDBE/DBE
Marr Arnold Planning, LLC	Caucasian	F	Milwaukee County	18-May	ACDBE/DBE
MARTHA LOVE ASSOCIATION, LLC	Black Americans	F	WisDOT	27-Mar	DBE
Martin & Martin GBSP, LLC	Black Americans	M	Milwaukee County	11-May	DBE
MARTINEZ GEOSPATIAL, INC.	Hispanic Americans	M	WisDOT	28-Mar	DBE
Martino's Trucking, LLC	Hispanic Americans	M	WisDOT	27-Feb	DBE
MARTINSEK & ASSOCIATES	Caucasian	F	Milwaukee County	21-May	DBE
Mary & Jones Construction, Inc.	Black Americans	F	Milwaukee County	27-Nov	DBE
MARY A. LYNCH	Caucasian	F	Milwaukee County	29-Sep	ACDBE/DBE
Master Concessionaire, LLC	Hispanic Americans	M	Milwaukee County	11-May	ACDBE/DBE
Mavo Concrete Sawing Services, Inc.	Caucasian	F	WisDOT	23-Oct	DBE
Mazur Zachow, Inc.	Caucasian	F	Milwaukee County	16-Oct	DBE
MB BROS TRUCKING, LLC	Hispanic Americans	M	WisDOT	28-Mar	DBE
MB Marketing Solutions, LLC	Caucasian	F	Milwaukee County	28-Sep	DBE
MBE Construction Services dba R T Materials	Hispanic Americans	M	Milwaukee County	5-Jun	DBE
MBTC, LLC	Black Americans	M	WisDOT	8-Jun	DBE
MC Force, LLC	Hispanic Americans	M	WisDOT	10-Aug	DBE
MCC Industries dba KMS Construction	Black Americans	M	WisDOT	18-Apr	DBE
McCole Trucking	Black Americans	F	Milwaukee County	25-Jun	DBE
MCE Trucking, LLC	Hispanic Americans	M	Milwaukee County	20-Dec	DBE
McEnroe Consulting Engineers LLC	Caucasian	F	Milwaukee County	19-Jun	DBE
McKinley Corporation of Milwaukee	Black Americans	M	Milwaukee County	30-Jul	DBE
MCPR, LLC	Caucasian	F	Milwaukee County	9-May	DBE
Menzel Enterprises, Inc.	Caucasian	F	WisDOT	18-Jan	DBE
Merilana Agencies LLC	Black Americans	M	Milwaukee County	3-Dec	DBE
METRO PRIVATE POLICE, LLC	Hispanic Americans	M	Milwaukee County	28-Jun	DBE
Metro Security Services, LLC	Black Americans	F	Milwaukee County	17-Dec	DBE
Meyer Companies, Inc. dba Pete's Water & Sewer, Inc.	Native Americans	M	Milwaukee County	5-Apr	DBE
Mid States Rebar and Supply, Inc.	Caucasian	F	WisDOT	5-Jan	DBE
MIDLAND HEALTH TESTING SERVICES, INC.	Caucasian	F	Milwaukee County	3-May	DBE
Midnight Run Materials, LLC	Caucasian	F	WisDOT	24-Apr	DBE
MID-STATE CONCRETE CUTTING, CO	Caucasian	F	WisDOT	15-Apr	DBE
Midwest Borings, Inc.	Caucasian	F	WisDOT	31-Mar	DBE
Midwest Construction & Management Services, LLC	Black Americans	F	Milwaukee County	28-Mar	DBE
Mid-West Institutional Food Distributor, Inc.	Caucasian	F	Milwaukee County	1-Jun	ACDBE/DBE
Midwest Legal & eData Services, Inc.	Caucasian	F	Milwaukee County	3-May	DBE
Midwest Signal & Light, Inc.	Caucasian	F	WisDOT	12-Jul	DBE
Midwest Structure Engineering, Inc.	Asian-Pacific Americans	M	WisDOT	16-Mar	DBE
MIDWESTERN ADJUSTMENT COMPANY	Caucasian	F	Milwaukee County	30-Mar	ACDBE/DBE
MIDWESTERN ROOFING & CONSTRUCTION	Black Americans	M	WisDOT	14-Jun	DBE
Mika Construction & Transportation, LLC	Caucasian	F	WisDOT	28-Sep	DBE
Milwaukee Insulation Solutions, LLC	Hispanic Americans	M	Milwaukee County	6-Oct	DBE
Milwaukee Metal Products Company	Caucasian	F	Milwaukee County	9-Aug	DBE
Milwaukee Network Services	Black Americans	M	Milwaukee County	26-Oct	DBE
Mina George Films	Hispanic Americans	F	Milwaukee County	16-Oct	DBE

MINCON, INC.	Caucasian	F	WisDOT	13-Jun	DBE
Mindful Staffing Solutions, LLC	Black Americans	M	Milwaukee County	22-Jul	DBE
Minervas Trucking, LLC	Hispanic Americans	M	WisDOT	30-Apr	DBE
Mitchell Insurance Agency	Native Americans	M	WisDOT	30-Apr	DBE
MITIG COMPANY, LLC	Native Americans	M	WisDOT	4-Dec	DBE
MJM Truckin LLC	Caucasian	F	WisDOT	15-May	DBE
MKE Iron Erectors, Inc.	Caucasian	F	WisDOT	30-Sep	DBE
MKE Trucking	Hispanic Americans	F	Milwaukee County	23-Jun	DBE
MKL TRUCKING	Hispanic Americans	M	WisDOT	5-Jan	DBE
MKZ Trucking, LLC	Black Americans	M	WisDOT	15-Jan	DBE
MO & MOE TRUCKING, LLC	Black Americans	M	WisDOT	27-Mar	DBE
Modern Crane Services, Inc	Asian-Pacific Americans	F	WisDOT	19-Jun	DBE
Mono's Trucking, LLC	Hispanic Americans	M	Milwaukee County	28-Nov	DBE
Montel Technologies, LLC	Hispanic Americans	M	Milwaukee County	24-Jul	DBE
Morales Trucking, LLC	Hispanic Americans	M	Milwaukee County	22-Aug	DBE
MORCOM N.V. INC.	Hispanic Americans	M	WisDOT	22-May	DBE
Morgan Group Valuation Services	Black Americans	M	Milwaukee County	18-Feb	DBE
MORIARTY SCHEDULING SERVICES, LLC	Caucasian	F	WisDOT	15-Dec	DBE
Moy Creative Services	Asian-Pacific Americans	F	Milwaukee County	13-Mar	DBE
MTC Moreno, Inc.	Hispanic Americans	M	WisDOT	24-Jul	DBE
MTM Performance Solutions, Inc.	Caucasian	F	WisDOT	29-Jun	DBE
MTZ Trucking LLC,	Hispanic Americans	M	Milwaukee County	24-Jan	DBE
Multicultural Entrepreneurship Institute, Inc.	Hispanic Americans	M	Milwaukee County	30-Jun	DBE
Municipal Marking Distributors, Inc.	Caucasian	F	WisDOT	20-Jun	DBE
MUNSTER STEEL COMPANY, INC.	Caucasian	F	WisDOT	10-Jan	DBE
Muse Community + Design	Caucasian	F	WisDOT	31-May	DBE
MWH Law Group, LLP	Black Americans	M	Milwaukee County	7-Dec	DBE
MYCITY TRANSPORTATION, INC	Black Americans	M	WisDOT	27-May	DBE
Nadeau Companies, LLC	Caucasian	F	WisDOT	12-Apr	DBE
Nagel Services LLC DBA Nagel Architects + Engineers	Caucasian	M	Milwaukee County	18-Feb	DBE
Nash Mechanical	Black Americans	M	Milwaukee County	14-Aug	DBE
Nash Transportation, LLC	Black Americans	M	WisDOT	31-Jan	DBE
NASHNAL SOIL TESTING, LLC	Asian-Pacific Americans	M	WisDOT	3-Jun	DBE
National Traffic Solutions, LLC	Black Americans	M	Milwaukee County	3-Aug	DBE
Nationwide Parking Services DBA Nationwide Parking Services, Inc.	Black Americans	M	Milwaukee County	23-Feb	DBE
NEIL HOOSIER & ASSOCIATES, INC.	Black Americans	M	WisDOT	18-Apr	DBE
New Eden Landscape Architecture, LLC	Caucasian	F	Milwaukee County	8-Oct	DBE
NEW TECH OF WISCONSIN INC	Caucasian	F	Dane County	30-Mar	DBE
New Venture, LLC dba Wilson Trucking	Black Americans	M	Milwaukee County	4-Apr	DBE
Newburns Management Group, LLC	Black Americans	M	Milwaukee County	6-Sep	ACDBE/DBE
Next-in-Town	Black Americans	M	WisDOT	11-Feb	DBE
Nexus Pest Solutions, Inc.	Black Americans	M	Milwaukee County	24-Dec	DBE
NEZA Trucking, LLC	Hispanic Americans	M	Milwaukee County	19-May	DBE
Niti Systems Consultants, Inc.	Subcontinent Asian Americans	M	Milwaukee County	31-Jul	ACDBE/DBE
Nomad Planners, LLC	Hispanic Americans	F	WisDOT	31-Aug	DBE
North American Safety Products, Inc.	Caucasian	F	WisDOT	21-Dec	DBE
North Country Surveying, Inc.	Caucasian	F	WisDOT	14-Aug	DBE
North States Steel Corp.	Caucasian	F	WisDOT	30-Apr	DBE
NORTHEAST CONSTRUCTION & LANDSCAPING, INC.	Native Americans	M	WisDOT	27-May	DBE
NORTHERN WISCONSIN BASED ENGINEERS, INC	Caucasian	F	WisDOT	9-Apr	DBE
NorthStar Strategies, Inc.	Caucasian	F	WisDOT	5-Jul	DBE
NovaRest, Inc.	Caucasian	F	WisDOT	27-Aug	DBE
NOVATECH SOLUTIONS, INC	Caucasian	F	Milwaukee County	22-Dec	DBE
NU-CHEZZ TRUCKING	Black Americans	M	WisDOT	9-May	DBE
OASIS COFFEE & VENDING SERVICE INC	Caucasian	F	Milwaukee County	28-Nov	DBE
OHM Concession Group, LLC	Asian-Pacific Americans	M	Milwaukee County	12-Jan	DBE

Olinger Trucking	Hispanic Americans	M	Milwaukee County	14-May	DBE
Olive Tree Consulting, LLC	Hispanic Americans	F	Milwaukee County	16-Sep	ACDBE/DBE
OMBUDSMAN, LLC	Black Americans	M	WisDOT	8-Aug	DBE
OMNI SYSTEMS INC.	Black Americans	M	WisDOT	23-Feb	DBE
On Track Railroad Contracting, LLC	Black Americans	M	WisDOT	24-Jun	DBE
One Accord, LLC	Black Americans	F	Milwaukee County	7-May	DBE
One Choice Constrction, Inc.	Black Americans	F	Milwaukee County	12-Oct	DBE
ONEIDA ENGINEERING SOLUTIONS, LLC (OES)	Native Americans	M	WisDOT	5-Mar	DBE
ON-SITE, INC.	Hispanic Americans	F	WisDOT	12-Oct	DBE
ONYX COMMUNICATIONS, LLC	Black Americans	M	Milwaukee County	17-Aug	DBE
Onyx IT Connect	Black Americans	F	Milwaukee County	1-Jul	DBE
Opportunity Knocks Educational Services, LLC	Black Americans	M	Milwaukee County	2-Jun	DBE
OSISI Tree Management LLC	Black Americans	M	Milwaukee County	21-Apr	DBE
P Diaz and Sons Trucking	Hispanic Americans	M	Milwaukee County	10-Dec	DBE
P L FREEMAN CO., INC.	Black Americans	M	Milwaukee County	14-Oct	DBE
P L Innovations, LLC	Black Americans	M	Milwaukee County	4-Apr	DBE
P Taylor Consulting, LLC	Black Americans	F	Milwaukee County	16-Oct	DBE
P W Construction	Black Americans	F	Milwaukee County	29-May	DBE
P.I.E. MANAGEMENT, LLC	Black Americans	M	WisDOT	31-Jan	DBE
P3 Development Group, LLC	Black Americans	F	Milwaukee County	5-Oct	DBE
P3 Infrastructure, Inc.	Asian-Pacific Americans	M	WisDOT	30-Oct	DBE
PA ROEPER & ASSOCIATES, INC	Caucasian	F	WisDOT	29-Jul	DBE
Pacific Park Management, Inc.	Black Americans	M	Milwaukee County	1-Jun	DBE
Paden Transport, Inc.	Black Americans	M	WisDOT	11-Jan	DBE
Pagoda Electric & Construction, Inc.	Black Americans	M	Milwaukee County	8-Jul	ACDBE/DBE
PARADISE TRUCKING CORPORATION	Caucasian	F	WisDOT	15-Nov	DBE
Parking Revenue Recovery Services, Inc.	Caucasian	F	Milwaukee County	1-Nov	ACDBE/DBE
PAR-LOC, INC.	Caucasian	F	WisDOT	18-Mar	DBE
Parsiz Group, LLC	Subcontinent Asian Americans	M	Milwaukee County	21-May	DBE
Partners for Economic Solutions, LLC	Caucasian	F	Milwaukee County	4-Nov	DBE
PAS TRUCKING, LLC	Black Americans	M	WisDOT	11-Jul	DBE
Patricia S. Algiers dba Chemistry in Place	Caucasian	F	Milwaukee County	13-Sep	DBE
PC LAN SERVICES OF WISCONSIN, LLC	Black Americans	M	WisDOT	14-Nov	DBE
Peachy Clean Commercial & Construction Cleaning, LLC	Black Americans	M	Milwaukee County	17-Aug	DBE
PE-CM, Inc.	Black Americans	M	Milwaukee County	7-Jun	DBE
PEMCCO INC.	Black Americans	M	WisDOT	24-Jul	DBE
Penn Services, LLC	Black Americans	M	WisDOT	22-Mar	DBE
PENNE WILSON CONSULTING	Caucasian	F	Milwaukee County	3-Oct	DBE
People's Transit, LTD.	Black Americans	M	Milwaukee County	25-May	DBE
Pepe's Trucking, LLC	Hispanic Americans	M	WisDOT	19-Mar	DBE
Peralta Garcia Solutions, LLC	Hispanic Americans	F	Milwaukee County	14-Jan	DBE
Perez Trucking, LLC	Hispanic Americans	M	WisDOT	30-Nov	DBE
Perfectly Maid Flooring & Home Services, LLC	Caucasian	F	Milwaukee County	30-Mar	DBE
Performance Clean, LLC (Milw)	Black Americans	F	Milwaukee County	29-Oct	DBE
Phalnx Consulting Solutions, LLC	Black Americans	M	WisDOT	29-Sep	DBE
Phyllis' Pie & Cake Shop, LLC	Black Americans	M	Milwaukee County	26-Apr	ACDBE/DBE
Physical Therapy of Milwaukee	Hispanic Americans	F	Milwaukee County	14-Dec	DBE
Piceno's Trucking	Hispanic Americans	M	Milwaukee County	16-Mar	DBE
Pilos Trucking LLC	Hispanic Americans	M	WisDOT	19-Jun	DBE
Pine Ridge Land Surveying, LLC	Native Americans	M	WisDOT	1-Aug	DBE
PLANT ASSOCIATES INC.	Caucasian	F	Milwaukee County	3-Jan	DBE
Platinum Transportation Services, LLC	Black Americans	M	Milwaukee County	27-Mar	ACDBE/DBE
Platt Construction, Inc.	Black Americans	M	Milwaukee County	2-Aug	DBE
Pleas Williams, LLC	Black Americans	F	Milwaukee County	30-Jun	DBE
PMT TRUCKING, LLC.	Black Americans	M	WisDOT	31-Oct	DBE
Poepping, Stone, Bach & Associates, Inc.	Subcontinent Asian Americans	M	WisDOT	30-Dec	DBE

Povolny Specialist, Inc.	Caucasian	F	WisDOT	1-Jul	DBE
Power Contractors, LLC	Hispanic Americans	M	Milwaukee County	8-Jun	DBE
PRECISE UNDERGROUND MARKING CORPORATION	Black Americans	M	WisDOT	3-May	DBE
Premiere Consulting Group	Black Americans	M	Milwaukee County	31-Jul	ACDBE/DBE
Pressure Express, LLC	Black Americans	M	Milwaukee County	25-Aug	DBE
PRICE & SONS, INC.	Black Americans	M	Milwaukee County	29-Apr	DBE
PRIME FOCUS, LLC	Caucasian	F	WisDOT	16-Mar	DBE
PRISM TECHNICAL MGT & MARKET SERVICES	Black Americans	M	WisDOT	9-Apr	DBE
Pristine Enterprise, LLC	Black Americans	M	Milwaukee County	4-Mar	DBE
PRO ELECTRIC, INC.	Native Americans	M	WisDOT	18-May	DBE
Professional Engineering, LLC	Caucasian	F	WisDOT	4-Feb	DBE
Professional Systems, Inc.	Black Americans	M	Milwaukee County	7-Jul	ACDBE/DBE
PROFESSIONAL TESTING SERVICES, LLC	Caucasian	F	WisDOT	22-Jun	DBE
Proline East LLC	Caucasian	F	WisDOT	30-May	DBE
PRO-TECH AUTO GLASS	Caucasian	F	Milwaukee County	23-Jun	ACDBE/DBE
Protech Coatings Inc.	Caucasian	F	WisDOT	11-Oct	DBE
PROTECTION TECHNOLOGIES, INC.	Caucasian	F	City of Madison	14-Feb	DBE
PumpFive LLC	Black Americans	F	Milwaukee County	4-Feb	DBE
Pyramid Electric Company. LLC	Black Americans	M	Milwaukee County	2-Dec	DBE
Q5 Consulting and Construction	Native Americans	M	WisDOT	10-Feb	DBE
QUALITY TRANSIT, LLC	Black Americans	M	WisDOT	22-Apr	DBE
Quest Civil Engineers LLC	Caucasian	F	WisDOT	30-Sep	DBE
QUICK FINANCIAL SOLUTIONS	Asian-Pacific Americans	M	WisDOT	16-Sep	DBE
Quick Weld	Hispanic Americans	M	Milwaukee County	21-Sep	DBE
Quigg Engineering Inc.	Asian-Pacific Americans	M	Milwaukee County	24-Jul	DBE
QUINN DAVID & ASSOCIATES, LLC	Black Americans	M	WisDOT	18-May	DBE
QUORUM ARCHITECTS INC	Caucasian	F	Milwaukee County	29-Apr	DBE
R & C Trucking, LLC	Caucasian	F	WisDOT	20-May	DBE
R & E MIDWEST SALES	Hispanic Americans	M	WisDOT	10-Feb	DBE
R & G Business Enterprises, LLC	Black Americans	F	Milwaukee County	15-Apr	DBE
R & G Engineering, LLC dba Reach Grow Exceed Engineering	Hispanic Americans	M	WisDOT	12-Aug	DBE
R A Seaton Contractor Services, LLC	Caucasian	F	WisDOT	8-Jul	DBE
R.M. Chin & Associates Inc.	Asian-Pacific Americans	F	Milwaukee County	17-Apr	ACDBE/DBE
RAD Trucking, LLC	Black Americans	M	WisDOT	9-Nov	DBE
Raimonde Drilling Corporation	Caucasian	F	Milwaukee County	1-Jan	DBE
RAM Auto Transport, LLC	Asian-Pacific Americans	M	Milwaukee County	22-May	DBE
RAM's Trucking II, LLC	Hispanic Americans	M	WisDOT	26-Feb	DBE
RANI ENGINEERING, LLC	Hispanic Americans	M	WisDOT	30-May	DBE
Rapid Response Public Safety L.L.C.	Hispanic Americans	M	Milwaukee County	4-Sep	DBE
RAUL V BRAVO & ASSOCIATES	Hispanic Americans	M	WisDOT	26-Mar	DBE
RDM International, Inc.	Asian-Pacific Americans	M	Milwaukee County	25-Mar	DBE
Reach Out Agency, LLC	Asian-Pacific Americans	M	Milwaukee County	3-Sep	DBE
Red Shoes, Inc.	Caucasian	F	Milwaukee County	31-May	DBE
Regali, Inc.	Subcontinent Asian Americans	F	Milwaukee County	30-Oct	ACDBE/DBE
REID FINANCIAL CONSLT'S & INSURANCE	Black Americans	F	Milwaukee County	4-Oct	DBE
REM SERVICES, INC.	Black Americans	F	WisDOT	31-Oct	DBE
Research Solutions. Inc.	Caucasian	F	Milwaukee County	8-May	DBE
Resource Associates, LLC	Caucasian	F	Milwaukee County	24-Apr	ACDBE/DBE
Restoration Works, Inc.	Caucasian	F	WisDOT	5-May	DBE
Retrac Business Group, LLC	Black Americans	M	WisDOT	23-Oct	DBE
Revelation, LLC	Asian-Pacific Americans	M	Milwaukee County	24-Sep	ACDBE/DBE
Reynaldo's Roofing Co, LLC	Hispanic Americans	M	Milwaukee County	15-Sep	DBE
Rez Threads Inc.	Native Americans	M	WisDOT	23-Jun	DBE
Rhonda Hartwig Trucking, LLC	Caucasian	F	WisDOT	16-Mar	DBE
Right Choice Janitorial Supply, LLC	Caucasian	F	Milwaukee County	25-Nov	DBE
Right Price Home Improvement, LLC	Black Americans	M	Milwaukee County	17-Jul	DBE

Risk Management Solutions of America, Inc.	Black Americans	M	Milwaukee County	16-May	DBE
River Valley Enterprises, LLC	Native Americans	M	WisDOT	30-Jun	DBE
Rivera & Associates, Inc.	Hispanic Americans	M	WisDOT	1-Mar	DBE
RL Controls, LLC	Caucasian	F	WisDOT	15-Apr	DBE
RL Davis Contracting Services, LLC	Black Americans	M	Milwaukee County	10-Sep	DBE
RLJ Trucking LLC	Caucasian	F	WisDOT	3-Sep	DBE
RLS & ASSOCIATES, INC	Caucasian	F	WisDOT	27-Jan	DBE
RMD Holdings LLC	Black Americans	M	Milwaukee County	22-Aug	ACDBE/DBE
RMS of Wisconsin, Inc.	Hispanic Americans	F	WisDOT	25-Aug	DBE
Roadway Material Supply, LLC	Caucasian	F	WisDOT	29-Mar	DBE
Robbins Law Group, LLC	Black Americans	F	Milwaukee County	19-Feb	DBE
Robin's Trucking, LLC	Caucasian	F	WisDOT	28-Apr	DBE
ROC EQUIPMENT, LLC	Caucasian	F	WisDOT	24-May	DBE
Rock On Enterprises Inc	Caucasian	F	WisDOT	1-Sep	DBE
RODRIGUEZ CONSTRUCTION CORP	Hispanic Americans	M	WisDOT	19-Jul	DBE
RODRIGUEZ LANDSCAPE CO., INC.	Hispanic Americans	M	Milwaukee County	17-Nov	DBE
Roman Logistics, LLC	Hispanic Americans	M	WisDOT	11-Feb	DBE
ROMP, LLC	Hispanic Americans	F	Milwaukee County	12-Mar	DBE
RON'S CARPETING & SERVICES INC.	Hispanic Americans	M	Milwaukee County	13-Jul	DBE
Ron's Trucking	Hispanic Americans	M	Milwaukee County	3-Mar	DBE
RORAIMA CONSULTING, INC.	Black Americans	F	WisDOT	31-Aug	DBE
ROSA'S FLORAL CREATIONS	Caucasian	F	Milwaukee County	24-Aug	DBE
ROSEMARK PRODUCTIONS, LLC	Black Americans	F	WisDOT	31-Jan	DBE
Row JAC Consulting LLC	Black Americans	M	City of Madison	19-Jul	DBE
Rowe Trucking, LLC	Black Americans	M	Milwaukee County	31-Oct	DBE
Royal Crane Service, Inc.	Hispanic Americans	M	WisDOT	30-Jun	DBE
Royal Shine II	Black Americans	M	Milwaukee County	4-Sep	ACDBE/DBE
Royalty Roofing, LLC	Hispanic Americans	M	Milwaukee County	30-Jun	DBE
Roy's Plumbing, Inc.	Black Americans	M	Milwaukee County	4-Dec	DBE
RTA Trucking, LLC	Hispanic Americans	M	Milwaukee County	14-Sep	DBE
RYAN SIGNS, INC	Caucasian	F	WisDOT	19-Feb	DBE
S P E, INC.	Caucasian	F	WisDOT	25-Aug	DBE
S&R Dynasty dba Chic Underground Restaurant & Lounge	Black Americans	F	Milwaukee County	12-Sep	ACDBE/DBE
S&S Wise Trucking, LLC	Black Americans	F	WisDOT	7-Oct	DBE
S.A.F.E., Inc.	Native Americans	M	WisDOT	11-Nov	DBE
S.A.L. TRAFFIC CONTROL	Caucasian	F	WisDOT	21-Sep	DBE
S.E.4 Trucking, Inc.	Hispanic Americans	M	WisDOT	25-May	DBE
SAFE CONNECT TRANSIT, LLC	Black Americans	F	WisDOT	29-Sep	DBE
Safeway Transportation, Inc.	Black Americans	M	Milwaukee County	1-Dec	DBE
Saga Environmental and Engineering, Inc.	Caucasian	F	WisDOT	26-May	DBE
Saiki Designs, Inc.	Asian-Pacific Americans	M	WisDOT	8-Nov	DBE
Salvador S Sanchez Trucking	Hispanic Americans	M	Milwaukee County	14-Oct	DBE
SANCHEZ INDUSTRIAL DESIGN, INC	Hispanic Americans	M	WisDOT	27-Oct	DBE
Sanchez Painting Contractors, Inc.	Hispanic Americans	M	WisDOT	4-Jun	DBE
Sanchez Trucking, LLC	Hispanic Americans	M	Milwaukee County	30-Jun	DBE
Saving Ourselves, LLC	Black Americans	F	Milwaukee County	27-Nov	DBE
Scale Construction, Inc.	Hispanic Americans	F	Milwaukee County	6-Aug	DBE
SCHILL TRUCKING, INC	Caucasian	F	WisDOT	7-Mar	DBE
SCHWEIGER & BAUMANN TRUCKING, LLC	Black Americans	M	WisDOT	28-Oct	DBE
Scotty's Construction & Building Supply, LLC	Black Americans	F	Milwaukee County	23-Jun	DBE
Scrub 'N Shine	Hispanic Americans	M	Milwaukee County	30-Jun	ACDBE/DBE
Sean & Sons Trucking	Black Americans	M	Milwaukee County	4-Oct	DBE
Secured Mobility	Asian-Pacific Americans	M	Milwaukee County	16-Feb	ACDBE/DBE
Security Logistics Group, Inc.	Black Americans	M	WisDOT	8-Jan	DBE
Security Officer Services, Inc.	Caucasian	F	Milwaukee County	30-Dec	DBE
Security Task Force, LLC	Black Americans	M	Milwaukee County	3-Dec	DBE

SEED CONSULTING, LLC	Black Americans	M	WisDOT	31-Jan	DBE
Selarom Construction, LLC	Hispanic Americans	M	Milwaukee County	4-May	DBE
Serendipity Communications	Black Americans	F	Milwaukee County	2-Jun	ACDBE/DBE
SHANZ ENTERPRISES, LLC	Caucasian	F	WisDOT	4-Feb	DBE
SHAWNTECH COMMUNICATIONS, INC.	Black Americans	M	Milwaukee County	13-Jun	DBE
SIE CONSULTING GROUP, LLC	Hispanic Americans	M	WisDOT	27-Nov	DBE
SIGHTLINE, LLC (VA)	Caucasian	F	Milwaukee County	26-Oct	ACDBE/DBE
Siker Enterprises, LLC	Asian-Pacific Americans	F	Milwaukee County	3-Aug	ACDBE/DBE
SINGH & ASSOCIATES, INC.	Asian-Pacific Americans	M	WisDOT	28-Sep	DBE
Sirrah Construction & Co. LLC	Black Americans	M	Milwaukee County	17-Feb	DBE
Site Design Group, Ltd	Asian-Pacific Americans	M	WisDOT	27-Jun	DBE
SJ Landscaping, LLC	Caucasian	F	WisDOT	19-Jul	DBE
SJK Engineering LLC	Caucasian	F	WisDOT	18-Aug	DBE
Skyedgcom, LLC	Black Americans	M	WisDOT	29-Aug	DBE
SLM Transport, LLC	Caucasian	F	Milwaukee County	17-Jun	DBE
Smith & Mac Trucking, LLC	Black Americans	F	WisDOT	20-Nov	DBE
SOEDER & ASSOCIATES, LLC	Caucasian	F	WisDOT	20-Aug	DBE
Solutions A. E., Inc.	Black Americans	F	Milwaukee County	15-Feb	ACDBE/DBE
Soma Transportation Service, LLC	Black Americans	F	Milwaukee County	5-Feb	DBE
Sosa Garcia LLC	Hispanic Americans	F	Milwaukee County	7-Jun	DBE
Sound Storm Design, LLC	Caucasian	F	Milwaukee County	14-Jan	DBE
Source 2 Market, LLC	Caucasian	F	WisDOT	22-Oct	DBE
South Star Logistics, LLC	Black Americans	M	WisDOT	16-Jul	DBE
SOUTH STAR, Inc	Black Americans	M	WisDOT	16-Jul	DBE
South West Contractors, LLC	Hispanic Americans	M	Milwaukee County	17-Feb	DBE
Spann & Associates, LLC	Black Americans	M	Milwaukee County	6-Jul	DBE
SPECIALIZED BUSINESS SERVICES	Black Americans	M	Dane County	16-Feb	ACDBE/DBE
SPENCER ACCOUNTING GROUP, LLC	Black Americans	F	WisDOT	31-Jul	DBE
SPENCER GLOBAL TRUCKING & CONSTRUCTION, LLC	Black Americans	F	WisDOT	22-Sep	DBE
SPENCER RENOVATION & CONSTRUCTION	Black Americans	M	WisDOT	20-Oct	DBE
SSM Trucking, LLC	Hispanic Americans	M	WisDOT	19-Oct	DBE
ST. General Contractors	Hispanic Americans	M	Milwaukee County	1-Jul	DBE
ST. GERMAINE ENTERPRISES, LLC	Native Americans	M	WisDOT	23-Jul	DBE
Standard of Excellence Education & Training Center, LLC	Black Americans	F	Milwaukee County	21-May	DBE
Stanley Harris Trucking	Black Americans	M	Milwaukee County	24-Apr	DBE
STEPPO SUPPLY & CONSTRUCTION, INC	Caucasian	F	WisDOT	12-Nov	DBE
STEVE PARK TRUCKING	Native Americans	M	WisDOT	15-May	DBE
STEVE POLICAR, LLC	Hispanic Americans	M	WisDOT	29-May	DBE
STEVENS ENGINEERS, INC.	Caucasian	F	WisDOT	22-Apr	DBE
STH & Associates, LLC	Black Americans	M	Milwaukee County	26-Sep	DBE
Stormwater Solutions Engineering, LLC.	Caucasian	F	WisDOT	12-Nov	DBE
Street Kingz, Inc.	Black Americans	M	WisDOT	28-Jul	DBE
SUCCESS STRATEGIES, INC	Caucasian	F	WisDOT	8-Jun	DBE
Sun Spec, LLC	Caucasian	F	Milwaukee County	20-Oct	DBE
Super Expedite, LLC	Black Americans	F	Milwaukee County	4-Nov	DBE
Superior & Reliable Builders, LLC	Caucasian	F	Milwaukee County	2-Jun	DBE
Superior Equipment & Supply Company	Asian-Pacific Americans	F	Milwaukee County	17-Mar	ACDBE/DBE
Superior Hospitality Group, LLC	Black Americans	M	Milwaukee County	12-Oct	ACDBE/DBE
Superior Site Safety	Caucasian	F	Milwaukee County	4-Sep	DBE
SUPERIOR SUPPORT RESOURCES, INC.	Asian-Pacific Americans	M	Milwaukee County	17-Mar	ACDBE/DBE
SURFACE PREP & MAINTENANCE	Caucasian	F	WisDOT	26-Aug	DBE
SYCAMORE ADVISORS, LLC	Caucasian	F	WisDOT	18-Jun	DBE
Symply Clean, LLC	Black Americans	M	Milwaukee County	5-Aug	DBE
SysLogic, Inc.	Asian-Pacific Americans	F	Milwaukee County	22-Jun	DBE
Szada Trucking, Inc.	Caucasian	F	Milwaukee County	20-Sep	DBE
T&S Trucking Service, LLC	Caucasian	F	WisDOT	30-Dec	DBE

T. Bell Trucking, LLC	Black Americans	M	Milwaukee County	6-May	DBE
T.L. Reese Construction, LLC	Black Americans	M	WisDOT	18-May	DBE
Tainter's Optimized Mechanical Solutions, LLC	Native Americans	M	WisDOT	31-Jan	DBE
TANK CONSTRUCTION SUPPLY LLC	Black Americans	M	WisDOT	8-May	DBE
TD SUPPLY SPECIALISTS, LLC	Caucasian	F	WisDOT	30-May	DBE
Teams by Design, Inc.	Asian-Pacific Americans	F	WisDOT	20-Nov	DBE
Technology Management Corporation	Caucasian	F	City of Madison	3-Feb	DBE
Tek3 Inc	Caucasian	F	Milwaukee County	14-Dec	DBE
TEMPCO Heating & Air Conditioning, Inc.	Asian-Pacific Americans	M	Milwaukee County	14-Oct	DBE
Temple Builders of America, LLC	Black Americans	M	Milwaukee County	22-May	DBE
TEMPS PLUS TEMPORARY SERVICES, INC	Black Americans	F	Milwaukee County	6-May	DBE
TERRATEC ENGINEERING, LLC	Caucasian	F	WisDOT	24-Feb	DBE
TerraVenture Advisors, LLC	Caucasian	F	WisDOT	17-May	DBE
Terrazzo USA and Associates, Inc.	Black Americans	F	Milwaukee County	17-Dec	ACDBE/DBE
Terrell Materials Corporation	Black Americans	M	WisDOT	27-Apr	DBE
The 106 Group Ltd.	Caucasian	F	WisDOT	22-May	DBE
The Aviation Planning Group, LLC	Caucasian	F	WisDOT	31-May	DBE
The Bartech Group, Inc.	Black Americans	M	Milwaukee County	10-Mar	DBE
The Expeditors Inc	Caucasian	F	WisDOT	21-Jun	DBE
The FIIT Perspective, LLC	Black Americans	F	Milwaukee County	17-Jan	DBE
The Forrest Group DBA Content Kartel	Black Americans	M	Milwaukee County	15-Feb	ACDBE/DBE
The Forrest Group dba Content Kartel, Fly On My Jet	Black Americans	M	Milwaukee County	25-Jan	ACDBE/DBE
The HIGHLAND GROUP OF WISCONSIN, INC.	Native Americans	M	WisDOT	22-Aug	DBE
The Jackson Consulting Firm, LLC	Black Americans	M	City of Madison	28-Sep	DBE
The Joxel Group, LLC	Asian-Pacific Americans	M	Milwaukee County	8-Aug	DBE
The Locust Group, LLC	Black Americans	M	WisDOT	10-Aug	DBE
THE NISHA GROUP, LLC	Black Americans	F	Milwaukee County	18-Apr	DBE
The Northterra Real Estate Group, LLC	Hispanic Americans	M	WisDOT	17-Jun	DBE
The Phoenix Transportation	Black Americans	F	Milwaukee County	26-Sep	DBE
The Quotient Group, LLC	Caucasian	F	Milwaukee County	20-Jul	ACDBE/DBE
The Reese Group, LLC	Caucasian	F	Milwaukee County	13-Jun	DBE
THE SIGN SHOP OF WEST BEND, LLC	Caucasian	F	Milwaukee County	25-Oct	ACDBE/DBE
THE WIDGET SOURCE	Caucasian	F	City of Madison	25-Feb	DBE
THINK SIGNS & GRAPHICS, LLC	Hispanic Americans	F	WisDOT	30-Jun	DBE
THOMAS A MASON COMPANY INC	Hispanic Americans	M	WisDOT	25-Sep	DBE
THOMPSON & ASSOCIATES WETLAND SERVICES	Caucasian	F	WisDOT	18-Feb	DBE
Three Sisters Landscaping	Native Americans	F	Milwaukee County	18-May	DBE
Thunder Road Asphalt, LLC.	Hispanic Americans	F	WisDOT	25-Jun	DBE
Thunderbird Engineering, Inc.	Native Americans	M	WisDOT	8-Jul	DBE
Tiles in Style, LLC dba Taza Supplies	Caucasian	F	WisDOT	23-Dec	DBE
TOKI & ASSOCIATES-Milw	Black Americans	M	WisDOT	1-Dec	DBE
Too Tall Trucking, Inc.	Native Americans	M	WisDOT	30-Sep	DBE
Toor Trucking, LLC	Asian-Pacific Americans	M	Milwaukee County	24-Mar	DBE
TOP HAT, INC	Caucasian	F	WisDOT	4-Jan	DBE
Topeka Capital Markets, Inc.	Black Americans	M	Milwaukee County	10-Jul	DBE
Total Response Technology, LLC	Hispanic Americans	F	WisDOT	22-Jun	DBE
Total Vision, LLC	Black Americans	M	Milwaukee County	20-Dec	DBE
TransformationServices, Inc.	Black Americans	F	Milwaukee County	4-May	DBE
TRANSIT SAFETY & SECURITY SOLUTIONS, INC.	Black Americans	M	WisDOT	23-Mar	DBE
TRANSLAND ENGINEERING GROUP	Black Americans	F	WisDOT	7-Sep	DBE
TranSmart Technologies, Inc.	Asian-Pacific Americans	F	WisDOT	14-Jun	DBE
Transportation Concession Partners	Caucasian	F	Milwaukee County	10-Feb	ACDBE/DBE
TRANSOLUTIONS, LLC	Caucasian	F	Milwaukee County	12-Sep	DBE
TREIDER INDUSTRIES INC	Hispanic Americans	M	Milwaukee County	21-Mar	DBE
TREMMELE-ANDERSON TRUCKING LLC	Caucasian	F	WisDOT	15-May	DBE
Tri City Plowing, LLC	Black Americans	M	Milwaukee County	17-Jan	DBE

Trinco Technologies, LLC	Asian-Pacific Americans	M	WisDOT	21-Jan	DBE
TRINITY CONSULTING, LLC	Caucasian	F	WisDOT	30-Aug	DBE
TRINITY TECHNOLOGY SERVICES, INC.	Black Americans	M	WisDOT	4-Aug	DBE
Trinity Trucks, LLC	Hispanic Americans	F	WisDOT	5-Jul	DBE
TRI-STAR SUPPLY, INC	Black Americans	M	WisDOT	26-Feb	DBE
Trotter Industries	Black Americans	M	Milwaukee County	12-Feb	DBE
True North Resources, LLC	Native Americans	F	Milwaukee County	5-Jan	DBE
Trujillo Drywall, LLC	Hispanic Americans	M	Milwaukee County	20-Oct	DBE
Truthwell Transit, LLC	Black Americans	M	Milwaukee County	9-Nov	DBE
TS&C (Technical Services & Consulting), LLC	Caucasian	F	WisDOT	21-Aug	DBE
Tunguyi Industries, LLC dba Sidebar	Hispanic Americans	M	Milwaukee County	22-Mar	ACDBE/DBE
TUNJI LESI CPA LLC	Black Americans	M	City of Madison	1-Jan	DBE
TWGraphics, LLC	Caucasian	F	WisDOT	15-Nov	DBE
TWIN LAKES TRANSIT, LTD	Caucasian	F	WisDOT	28-Feb	DBE
Two Buffalo Construction Supplies, Inc.	Native Americans	M	WisDOT	24-Apr	DBE
TWO HUNDRED, INC.	Caucasian	F	WisDOT	18-Oct	DBE
TYE BAR, LLC	Caucasian	F	WisDOT	21-Dec	DBE
Tyler Communication, Inc.	Black Americans	M	Milwaukee County	20-Mar	ACDBE/DBE
UDEEN TRUCKING, INC	Caucasian	F	WisDOT	28-Apr	DBE
Ultimate Contractors, Inc.	Hispanic Americans	M	Milwaukee County	12-Dec	DBE
Unison Consulting, Inc.	Black Americans	F	Milwaukee County	25-Jun	ACDBE/DBE
Unit Security, LLC	Black Americans	M	Milwaukee County	7-Jul	DBE
United Region Transit Services, LLC	Black Americans	F	Milwaukee County	27-Mar	DBE
Universal Electric, LLC	Black Americans	M	City of Madison	18-Jul	DBE
UPI, LLC	Native Americans	M	WisDOT	21-Feb	DBE
Urban Assets, LLC	Caucasian	F	City of Madison	27-Sep	DBE
Urban Construction Administration, Inc.	Black Americans	M	City of Madison	14-Jun	DBE
Urban GIS, Inc	Black Americans	M	Milwaukee County	2-Apr	DBE
Urban Strategies, LLC; DBA Sector Management Consulting Group	Black Americans	M	Milwaukee County	20-Oct	DBE
Utility Sales and Supply, Inc.	Caucasian	F	WisDOT	8-Dec	DBE
V & T Trucking, LLC	Black Americans	M	WisDOT	5-Nov	DBE
Value Creation, LLC	Black Americans	M	Milwaukee County	21-Mar	DBE
Vanguard Group, LLC dba Vanguard Construction, LLC	Black Americans	M	Milwaukee County	6-Aug	DBE
VANGUARD COMPUTERS INC.	Caucasian	F	Milwaukee County	17-Aug	ACDBE/DBE
Vanzile Contractors, LLC	Native Americans	M	WisDOT	31-Jul	DBE
Vazquez Home Improvement	Hispanic Americans	M	Milwaukee County	16-Mar	DBE
VDV Concessions, LLC	Black Americans	F	Milwaukee County	25-May	ACDBE/DBE
VENUS PAINTING COMPANY	Caucasian	F	WisDOT	5-Apr	DBE
VIC THOMPSON COMPANY	Caucasian	F	WisDOT	28-Dec	DBE
Vinii Solar Engineering & Electric	Black Americans	M	Milwaukee County	14-Mar	DBE
Virginkar & Associates, Inc.	Asian-Pacific Americans	F	WisDOT	29-Oct	DBE
Visage Production, Inc.	Black Americans	F	Milwaukee County	21-Dec	DBE
Visions Tax Solutions and Services Inc	Black Americans	F	Milwaukee County	20-Dec	DBE
Vizcaino's Trucking LLC	Hispanic Americans	M	WisDOT	1-Mar	DBE
Volley Life, LLC	Hispanic Americans	M	Milwaukee County	22-Apr	DBE
W.E. Diggs, LLC	Black Americans	M	Milwaukee County	21-Jul	DBE
Ward Welding and Fabrication, Inc.	Native Americans	M	Milwaukee County	25-Aug	DBE
WASHINGTON INVESTMENTS, LLC dba ProPainterMKE	Black Americans	M	Milwaukee County	16-Oct	DBE
Water365, LLC	Caucasian	F	Milwaukee County	20-Jan	DBE
WATERFORD TRUCK SERVICE, INC	Caucasian	F	WisDOT	20-Feb	DBE
WDSI, Inc.	Caucasian	F	Milwaukee County	22-Aug	DBE
Weatherization Services, LLC	Black Americans	M	Milwaukee County	27-Jul	DBE
WEE CARE LAWN SERVICE, LLC	Black Americans	M	Milwaukee County	4-Dec	DBE
Wesley Insurance Agency, Inc.	Black Americans	M	Milwaukee County	14-Nov	DBE
WESTERN BILINGUAL EMPLOYMENT SERVICES, LLC	Asian-Pacific Americans	F	Milwaukee County	14-Jul	DBE
Wetlands and Waterways, LLC	Caucasian	F	WisDOT	18-Jun	DBE

Whayne and Sons Enterprises, Inc.	Black Americans	M	WisDOT	13-Jun	DBE
WHIRE Electrical Services, LLC	Black Americans	M	Milwaukee County	31-Oct	DBE
WHITE BUFFALO TRUCKING, LLC	Native Americans	F	WisDOT	24-Nov	DBE
White Glove Group, LLC	Black Americans	M	Milwaukee County	11-Oct	DBE
WHITE WATER ASSOCIATES, INC	Caucasian	F	WisDOT	27-May	DBE
Will's Trucking, LLC	Hispanic Americans	M	Milwaukee County	10-Feb	DBE
WIRE CONNECTIONS	Black Americans	M	Milwaukee County	7-Dec	DBE
WISCONSIN INTERSTATE CONTRACTING, LLC	Caucasian	F	WisDOT	8-Feb	DBE
Wisconsin Landscaping & Garden Center, LLC	Caucasian	F	City of Madison		DBE
Wisconsin Rebar, Inc	Caucasian	F	WisDOT	10-Jan	DBE
Wisconsin Special Security Police Services, LLC	Black Americans	M	Milwaukee County	30-Jun	DBE
Wisconsin Utility Exposure, Inc.	Caucasian	F	Milwaukee County	10-Feb	DBE
Woodland Consulting, LLC	Caucasian	F	Milwaukee County	3-Mar	DBE
Wrightson, Johnson, Haddon & Williams, Inc.	Caucasian	F	Milwaukee County	12-Jul	DBE
X-TRA Clean Cleaning Co., Inc.	Black Americans	M	Milwaukee County	7-Mar	DBE
Xyples, LLC	Black Americans	M	Milwaukee County	5-Nov	ACDBE/DBE
YMYSPT Cleanup, LLC	Black Americans	F	Milwaukee County	31-Aug	DBE
Young Enterprising Solutions, LLC	Black Americans	M	Milwaukee County	3-Mar	DBE
Young's Lawn Care, LLC	Black Americans	M	Milwaukee County	29-May	DBE
Z VENTURE CAPITAL FRONTIERS, INC. DBA. The Zaman Group	Black Americans	M	Milwaukee County	3-Jan	ACDBE/DBE
ZACZKOWSKI TRUCKING, LLC.	Caucasian	F	WisDOT	31-Aug	DBE
ZARA, LLC	Black Americans	M	WisDOT	27-Sep	DBE
ZOE ENGINEERING, LLC	Black Americans	F	Milwaukee County	13-Jun	DBE

Monday, July 12, 2021

MINORITY DEPOSITORY INSTITUTIONS (MDIs)
June 30, 2021

NAME	CITY	STATE	EST. DATE	CERT	CLASS	REGULATOR	MINORITY	MINORITY STATUS BY	FDIC	TOTAL	
							STATUS	OWNERSHIP TYPE			REGION
							Alpha	Num.			
ALAMERICA BANK	BIRMINGHAM	AL	20000128	35314	NM	FDIC	B	1	ATLANTA	15,110	
COMMONWEALTH NATIONAL BANK	MOBILE	AL	19760219	22229	N	OCC	B	1	ATLANTA	59,745	
BANESCO USA	CORAL GABLES	FL	20060110	57815	NM	FDIC	H	2	ATLANTA	2,054,892	
U S CENTURY BANK	DORAL	FL	20021028	57369	NM	FDIC	H	2	ATLANTA	1,667,005	
INTERAMERICAN BANK A FSB	MIAMI	FL	19760823	31823	SB	OCC	H	2	ATLANTA	259,805	
INTERNATIONAL FINANCE BANK	MIAMI	FL	19831130	24823	NM	FDIC	H	2	ATLANTA	926,899	
OCEAN BANK	MIAMI	FL	19821209	24156	NM	FDIC	H	2	ATLANTA	4,806,671	
PLUS INTERNATIONAL BANK	MIAMI	FL	20010914	57083	NM	FDIC	H	7	ATLANTA	80,442	
SUNSTATE BANK	MIAMI	FL	19990315	34643	NM	FDIC	H	7	ATLANTA	524,440	
CENTRAL BANK	TAMPA	FL	20070226	58377	NM	FDIC	A	3	ATLANTA	282,883	
TOUCHMARK NATIONAL BANK	ALPHARETTA	GA	20080128	58687	N	OCC	A	3	ATLANTA	144,095	
CITIZENS TRUST BANK	ATLANTA	GA	19210618	8033	SM	FED	B	1	ATLANTA	637,852	
FIRST IC BANK	DORAVILLE	GA	20000131	34998	NM	FDIC	A	3	ATLANTA	881,506	
METRO CITY BANK	DORAVILLE	GA	20060404	58181	NM	FDIC	A	3	ATLANTA	2,520,354	
PROMISEONE BANK	DULUTH	GA	20081106	58657	NM	FDIC	A	3	ATLANTA	561,556	
LOYAL TRUST BANK	JOHNS CREEK	GA	20191118	59182	NM	FDIC	A	8	ATLANTA	108,673	
EMBASSY NATIONAL BANK	LAWRENCEVILLE	GA	20070305	58413	N	OCC	A	3	ATLANTA	119,488	
CARVER STATE BANK	SAVANNAH	GA	19270101	16584	NM	FDIC	B	1	ATLANTA	70,455	
QUANTUM NATIONAL BANK	SUWANEE	GA	19951227	34110	N	OCC	A	3	ATLANTA	614,918	
MECHANICS&FARMERS BANK	DURHAM	NC	19080301	12266	NM	FDIC	B	1	ATLANTA	358,383	
LUMBEE GUARANTY BANK	PEMBROKE	NC	19711222	20568	NM	FDIC	N	4	ATLANTA	454,601	
OPTUS BANK	COLUMBIA	SC	19990326	35241	NM	FDIC	B	1	ATLANTA	315,217	
CITIZENS BANK OF CHATSWORTH	CHATSWORTH	IL	19031207	10843	NM	FDIC	A	3	CHICAGO	39,841	
AMERICAN METRO BANK	CHICAGO	IL	19970129	34334	NM	FDIC	A	3	CHICAGO	89,709	
GN BANK	CHICAGO	IL	19340101	29399	SB	OCC	B	1	CHICAGO	91,062	
INTERNATIONAL BK OF CHICAGO	CHICAGO	IL	19921026	33708	NM	FDIC	A	3	CHICAGO	866,851	
MILLENNIUM BANK	DES PLAINES	IL	20070702	58348	NM	FDIC	A	3	CHICAGO	259,786	
FIRST INDEPENDENCE BANK	DETROIT	MI	19700514	20179	NM	FDIC	B	1	CHICAGO	348,879	
BAY BANK	GREEN BAY	WI	19950821	34052	NM	FDIC	N	4	CHICAGO	204,555	
COLUMBIA SAVINGS&LOAN ASSN	MILWAUKEE	WI	19240101	28480	SL	FDIC	B	1	CHICAGO	25,541	
NATIVE AMERICAN BANK NA	DENVER	CO	19870727	27026	N	OCC	N	4	DALLAS	166,287	
LIBERTY BANK&TRUST CO	NEW ORLEANS	LA	19721116	20856	NM	FDIC	B	1	DALLAS	889,262	
COMMUNITY 1ST BANK LAS VEGAS	LAS VEGAS	NM	19491123	16854	NM	FDIC	H	2	DALLAS	168,871	
CENTINEL BANK OF TAOS	TAOS	NM	19690301	19904	NM	FDIC	H	2	DALLAS	379,161	
FIRSTBANK	ANTLERS	OK	19010101	14331	SM	FED	N	4	DALLAS	565,876	
ALLNATIONS BANK	CALUMET	OK	19010101	4051	SM	FED	N	4	DALLAS	48,246	
F&M BANK	EDMOND	OK	19020101	12761	NM	FDIC	N	4	DALLAS	608,533	
BANK OF GRAND LAKE	GROVE	OK	20050609	57915	NM	FDIC	H	2	DALLAS	211,645	
BANK OF CHEROKEE COUNTY	HULBERT	OK	19081201	2327	SM	FED	N	4	DALLAS	162,574	
GATEWAY FIRST BANK	JENKS	OK	19350302	15118	NM	FDIC	N	4	DALLAS	1,990,624	
CHICKASAW COMMUNITY BANK	OKLAHOMA CITY	OK	19030101	11521	SM	FED	N	4	DALLAS	334,360	
FIRST SECURITY BANK&TRUST CO	OKLAHOMA CITY	OK	19510406	17001	NM	FDIC	B	1	DALLAS	63,352	
LAKESIDE STATE BANK	OLOGAH	OK	19760209	22217	NM	FDIC	N	4	DALLAS	83,480	
FIRST NATIONAL BANK&TRUST CO	SHAWNEE	OK	19841029	25738	N	OCC	N	4	DALLAS	241,811	
CARSON COMMUNITY BANK	STILWELL	OK	19030203	2320	NM	FDIC	N	4	DALLAS	176,488	
OKLAHOMA STATE BANK	VINITA	OK	19380713	15611	NM	FDIC	N	4	DALLAS	216,583	
TRI-STATE BANK OF MEMPHIS	MEMPHIS	TN	19461216	16511	NM	FDIC	B	1	DALLAS	113,190	
CITIZENS SAVINGS B&T CO	NASHVILLE	TN	19040104	10319	NM	FDIC	B	1	DALLAS	127,644	
THE FIRST STATE BANK	ABERNATHY	TX	19310101	11175	NM	FDIC	N	4	DALLAS	49,712	
INTERNATIONAL BK OF COM	BROWNSVILLE	TX	19841009	25679	NM	FDIC	H	7	DALLAS	1,497,587	
AMERICAN BANK NATIONAL ASSN	DALLAS	TX	19740502	21567	N	OCC	A	3	DALLAS	206,135	
ONE WORLD BANK	DALLAS	TX	20050404	57901	NM	FDIC	A	3	DALLAS	142,616	
STATE BANK OF TEXAS	DALLAS	TX	19871019	27074	NM	FDIC	A	3	DALLAS	1,118,469	
UNITED BK EL PASO DEL NORTE	EL PASO	TX	20010501	57119	SM	FED	H	2	DALLAS	319,606	
SPECTRA BANK	FORT WORTH	TX	19860630	26708	NM	FDIC	A	3	DALLAS	100,040	
FREEDOM BANK	FREER	TX	19580712	17881	NM	FDIC	H	2	DALLAS	81,607	
AMERICAN FIRST NATIONAL BANK	HOUSTON	TX	19980518	34656	N	OCC	A	3	DALLAS	2,140,085	
GOLDEN BANK NATIONAL ASSN	HOUSTON	TX	19850503	26223	N	OCC	A	3	DALLAS	1,294,427	
SOUTHWESTERN NATIONAL BANK	HOUSTON	TX	19971103	34319	N	OCC	A	3	DALLAS	799,202	
UNITY NB OF HOUSTON	HOUSTON	TX	19850801	26351	N	OCC	B	1	DALLAS	227,583	
COMMERCE BANK	LAREDO	TX	19820331	23772	NM	FDIC	H	7	DALLAS	613,503	
FALCON INTERNATIONAL BANK	LAREDO	TX	19861210	26856	NM	FDIC	H	2	DALLAS	1,670,512	
INTERNATIONAL BK OF COM	LAREDO	TX	19660902	19629	NM	FDIC	H	7	DALLAS	10,810,384	
BANK OF SOUTH TEXAS	MCALLEN	TX	19860708	26727	NM	FDIC	H	2	DALLAS	136,531	
RIO BANK	MCALLEN	TX	19850211	25886	NM	FDIC	H	7	DALLAS	745,231	
TEXAS NATIONAL BANK	MERCEDES	TX	19201126	3337	N	OCC	H	2	DALLAS	725,369	
LONE STAR NATIONAL BANK	PHARR	TX	19830124	24347	N	OCC	H	2	DALLAS	2,875,725	
CITIZENS STATE BANK	ROMA	TX	19780515	22657	NM	FDIC	H	2	DALLAS	90,941	
FIRST STATE BANK	SHALLOWATER	TX	19601008	18301	NM	FDIC	A	3	DALLAS	115,328	
WALLIS BANK	WALLIS	TX	19721028	20845	NM	FDIC	A	3	DALLAS	1,226,743	
INTERNATIONAL BK OF COM	ZAPATA	TX	19840206	24961	NM	FDIC	H	7	DALLAS	468,747	
ZAPATA NATIONAL BANK	ZAPATA	TX	19611116	18454	N	OCC	H	2	DALLAS	91,924	
PINNACLE BANK	MARSHALLTOWN	IA	19270505	252	SM	FED	N	4	KANSAS CITY	261,098	
CBW BANK	WEIR	KS	19340228	13959	NM	FDIC	A	3	KANSAS CITY	100,639	
WOODLANDS NATIONAL BANK	HINCKLEY	MN	19081001	1417	N	OCC	N	4	KANSAS CITY	354,982	
PEOPLES BANK OF SENECA	SENECA	MO	19960315	34146	NM	FDIC	N	4	KANSAS CITY	338,379	
TURTLE MOUNTAIN STATE BANK	BELCOURT	ND	20071203	58586	NM	FDIC	N	4	KANSAS CITY	217,994	
CITY FIRST BANK, NA	WASHINGTON	DC	19981124	34352	N	OCC	B	6	NEW YORK	1,040,745	
INDUSTRIAL BANK	WASHINGTON	DC	19340818	14679	NM	FDIC	B	1	NEW YORK	592,228	
LEADER BANK NATIONAL ASSN	ARLINGTON	MA	20020508	57134	N	OCC	A	3	NEW YORK	2,651,530	
HARBOR BANK OF MARYLAND	BALTIMORE	MD	19820913	24015	NM	FDIC	B	6	NEW YORK	333,503	
KEB HANA BANK USA NA	FORT LEE	NJ	19860916	26790	N	OCC	A	3	NEW YORK	284,342	
NEW MILLENNIUM BANK	FORT LEE	NJ	19990719	35151	NM	FDIC	A	8	NEW YORK	527,082	
PONCE BANK	BRONX	NY	19600331	31189	SB	OCC	H	7	NEW YORK	1,525,350	
AMERASIA BANK	FLUSHING	NY	19880620	27267	NM	FDIC	A	3	NEW YORK	824,807	
NEWBANK	FLUSHING	NY	20060929	58203	NM	FDIC	A	3	NEW YORK	553,278	
ABACUS FEDERAL SAVINGS BANK	NEW YORK	NY	19841129	32257	SB	OCC	A	3	NEW YORK	354,139	
CARVER FEDERAL SAVINGS BANK	NEW YORK	NY	19480101	30394	SB	OCC	B	6	NEW YORK	683,518	
EASTBANK NATIONAL ASSN	NEW YORK	NY	19841126	25749	N	OCC	A	3	NEW YORK	169,524	
GLOBAL BANK	NEW YORK	NY	20070312	58263	NM	FDIC	A	3	NEW YORK	215,498	
PIERMONT BANK	NEW YORK	NY	20190701	59154	NM	FDIC	M	10	NEW YORK	287,303	
POPULAR BANK	NEW YORK	NY	19990102	34967	SM	FED	H	7	NEW YORK	10,197,171	
SHINHAN BANK AMERICA	NEW YORK	NY	19901018	33188	NM	FDIC	A	8	NEW YORK	1,863,825	
UNITED ORIENT BANK	NEW YORK	NY	19810409	23373	NM	FDIC	A	3	NEW YORK	91,486	
WOORI AMERICAN BANK	NEW YORK	NY	19840127	24920	NM	FDIC	A	8	NEW YORK	2,515,864	
NOAH BANK	ELKINS PARK	PA	20060717	58196	NM	FDIC	A	3	NEW YORK	362,480	
ASIAN BANK	PHILADELPHIA	PA	19990609	34759	SM	FED	A	3	NEW YORK	293,642	

UNITED BANK OF PHILADELPHIA	PHILADELPHIA	PA	19920323	33568	NM	FDIC	B	1	NEW YORK	64,162
BANCO POPULAR DE PUERTO RICO	SAN JUAN	PR	19990102	34968	SM	FED	H	7	NEW YORK	61,966,000
ORIENTAL BANK	SAN JUAN	PR	19650325	31469	NM	FDIC	H	7	NEW YORK	10,367,009
FIRSTBANK PUERTO RICO	SANTURCE	PR	19490117	30387	NM	FDIC	H	7	NEW YORK	21,361,138
FIRST COMMERCIAL BANK USA	ALHAMBRA	CA	19970520	34496	NM	FDIC	A	8	SAN FRANCISCO	792,467
NEW OMNI BANK NATIONAL ASSN	ALHAMBRA	CA	19800212	23086	N	OCC	A	3	SAN FRANCISCO	577,291
AMERICAN PLUS BANK N A	ARCADIA	CA	20070808	58469	N	OCC	A	3	SAN FRANCISCO	582,797
FIRST CHOICE BANK	CERRITOS	CA	20050818	57966	SM	FED	A	3	SAN FRANCISCO	2,445,028
AMERICAN CONTINENTAL BANK	CITY OF INDUSTRY	CA	20031006	57444	NM	FDIC	A	3	SAN FRANCISCO	331,329
UNITED PACIFIC BANK	CITY OF INDUSTRY	CA	19820511	23805	NM	FDIC	A	3	SAN FRANCISCO	177,071
COMMUNITY COMMERCE BANK	CLAREMONT	CA	19761001	26363	NM	FDIC	H	2	SAN FRANCISCO	334,088
US METRO BANK	GARDEN GROVE	CA	20060915	58310	NM	FDIC	A	3	SAN FRANCISCO	872,016
CALIFORNIA BUSINESS BANK	IRVINE	CA	20051101	58037	NM	FDIC	A	3	SAN FRANCISCO	97,148
COMMERCIAL BANK OF CA	IRVINE	CA	20030515	57417	NM	FDIC	H	2	SAN FRANCISCO	1,691,768
BANK OF HOPE	LOS ANGELES	CA	19860318	26610	NM	FDIC	A	8	SAN FRANCISCO	17,464,009
CATHAY BANK	LOS ANGELES	CA	19620419	18503	NM	FDIC	A	3	SAN FRANCISCO	19,330,759
COMMONWEALTH BUSINESS BANK	LOS ANGELES	CA	20050303	57873	SM	FED	A	3	SAN FRANCISCO	1,612,861
CTBC BANK CORP USA	LOS ANGELES	CA	19650427	19416	NM	FDIC	A	8	SAN FRANCISCO	4,022,260
EASTERN INTERNATIONAL BANK	LOS ANGELES	CA	19850226	32277	NM	FDIC	A	3	SAN FRANCISCO	137,250
HANMI BANK	LOS ANGELES	CA	19821215	24170	NM	FDIC	A	8	SAN FRANCISCO	6,577,108
OPEN BANK	LOS ANGELES	CA	20050610	57944	NM	FDIC	A	3	SAN FRANCISCO	1,601,405
PACIFIC CITY BANK	LOS ANGELES	CA	20030918	57463	NM	FDIC	A	3	SAN FRANCISCO	2,059,944
PREFERRED BANK	LOS ANGELES	CA	19911223	33539	NM	FDIC	A	3	SAN FRANCISCO	5,577,136
ROYAL BUSINESS BANK	LOS ANGELES	CA	20081118	58816	NM	FDIC	A	8	SAN FRANCISCO	3,885,317
GATEWAY BANK FSB	OAKLAND	CA	19900608	33103	SB	OCC	A	3	SAN FRANCISCO	201,752
METROPOLITAN BANK	OAKLAND	CA	19830901	25869	NM	FDIC	A	3	SAN FRANCISCO	209,986
EAST WEST BANK	PASADENA	CA	19720101	31628	SM	FED	A	8	SAN FRANCISCO	59,838,864
EVERTRUST BANK	PASADENA	CA	19950503	34010	NM	FDIC	A	8	SAN FRANCISCO	1,029,659
PACIFIC ALLIANCE BANK	ROSEMEAD	CA	20061227	58234	NM	FDIC	A	3	SAN FRANCISCO	348,359
FIRST GENERAL BANK	ROWLAND HEIGHTS	CA	20051013	58060	NM	FDIC	A	3	SAN FRANCISCO	1,178,290
BANK OF THE ORIENT	SAN FRANCISCO	CA	19710317	20387	SM	FED	A	3	SAN FRANCISCO	917,207
CALIFORNIA PACIFIC BANK	SAN FRANCISCO	CA	19801016	23242	NM	FDIC	A	3	SAN FRANCISCO	79,804
MISSION NATIONAL BANK	SAN FRANCISCO	CA	19820216	23749	N	OCC	A	3	SAN FRANCISCO	221,220
ASIAN PACIFIC NATIONAL BANK	SAN GABRIEL	CA	19900725	33013	N	OCC	A	3	SAN FRANCISCO	56,256
MEGA BANK	SAN GABRIEL	CA	20080205	58401	NM	FDIC	A	3	SAN FRANCISCO	436,548
UNIVERSAL BANK	WEST COVINA	CA	19541117	30722	SB	OCC	A	3	SAN FRANCISCO	392,293
CALIFORNIA INTL BANK N A	WESTMINSTER	CA	20051130	57974	N	OCC	A	3	SAN FRANCISCO	82,802
BANK OF WHITTIER NA	WHITTIER	CA	19821220	24211	N	OCC	A	3	SAN FRANCISCO	166,012
ANZ GUAM INC	HAGATNA	GU	19910111	33316	NM	FDIC	A	8	SAN FRANCISCO	421,314
BANK OF GUAM	HAGATNA	GU	19721211	20884	NM	FDIC	A	3	SAN FRANCISCO	2,921,544
BANKPACIFIC LTD	HAGATNA	GU	19530101	30692	SL	FDIC	A	3	SAN FRANCISCO	188,066
FINANCE FACTORS LTD	HONOLULU	HI	19520514	25158	NM	FDIC	A	3	SAN FRANCISCO	559,223
HAWAII NATIONAL BANK	HONOLULU	HI	19600916	18296	N	OCC	A	3	SAN FRANCISCO	883,672
OHANA PACIFIC BANK	HONOLULU	HI	20060601	58231	NM	FDIC	A	3	SAN FRANCISCO	226,186
ONEUNITED BANK	BOSTON	MA	19820802	23966	NM	FDIC	B	1	SAN FRANCISCO	616,418
EAGLE BANK	POLSON	MT	20060725	58282	NM	FDIC	N	4	SAN FRANCISCO	94,649
UNIBANK	LYNNWOOD	WA	20061101	58407	SM	FED	A	3	SAN FRANCISCO	417,079
Total			Count	144						\$315,811,679

<u>Count</u>	<u>Minority Status</u>
20	B - Black or African American
30	H - Hispanic American
74	A - Asian or Pacific Islander American
19	N - Native American or Alaskan Native American
1	M - Multi-racial American

<u>Class</u>	<u>Definitions of Class Types</u>
94	NM - State bank, not a member of the Federal Reserve
15	SM - State bank, member of the Federal Reserve
26	N - National bank
2	SL - State or Federal savings and loan association
7	SB - State or Federal savings bank

<u>Regulator</u>	<u>Definitions by Primary Federal Supervisory Agency</u>
96	FDIC - Federal Deposit Insurance Corporation
33	OCC - Office of the Comptroller of the Currency
15	FED - Federal Reserve

<u>Count</u>	<u>Minority Status by Ownership Type</u>
17	1 - Black or African American owned
18	2 - Hispanic American owned
62	3 - Asian or Pacific Islander American owned
19	4 - Native American or Alaskan Native American owned
0	5 - Multi-racial American owned
3	6 - Majority of the Board African American, serving a minority community
12	7 - Majority of the Board Hispanic American, serving a minority community
12	8 - Majority of the Board Asian or Pacific Islander, serving a minority community
0	9 - Majority of the Board Native American or Alaskan Native American, serving a minority community
1	10 - Majority of the Board Multiracial, Serving a Minority Community

Prompt Payment Log
WI City Contract with *Contractor 123*

City of Onalaska: Prompt Payment Log

Onalaska - Record of Payments to <i>Contractor 123</i>				<i>Contractor 123</i> Record of Payments to <i>Subcontractors</i>			
Payment Number	Invoice Number	Payment Amount	Payment Date	Payment Date*	Invoice Number	Payment Amount	Subcontractor Name
<i>1</i>	<i>20130011</i>	<i>\$1,516.25</i>	<i>10/18/2017</i>	<i>11/25/2017</i>	<i>13-10-125</i>	<i>\$79.36</i>	<i>Subcontractor ABC</i>
Total Payments to Date		\$0.00		Total Payments to Date		\$0.00	

Note:

Payment must be made by the Contractor to the Subcontractor for satisfactorily completed work within 30 calendar days of receipt of payment from contract originator.

DBE Subcontract Commitment

Instructions:

Identify each DBE subcontractor that will participate in the contract if the bidder is awarded the contract as the Prime Contractor. Only DBE firms, certified as of the bid/proposal due date, and as maintained on the WisDOT Unified Certification Program Directory [WisDotUCPDirectory](#) may be included. Complete all of the requested information. Add additional sheets as needed.

Project ID		Bid Due Date	
Project Title		DBE Contract Goal	%

Prime Contractor	
Address	
Email	
Phone	

DBE?	
Yes	No

Description of work <i>(If Prime Contractor is a DBE)</i>	
--	--

Identify each DBE subcontractor:

DBE Subcontractor	
Address	
Email	
Phone	
DBE Subcontract Amount	\$
Description of DBE Work	

DBE Subcontractor	
Address	
Email	
Phone	
DBE Subcontract Amount	\$
Description of DBE Work	

DBE Subcontractor	
Address	
Email	
Phone	
DBE Subcontract Amount	\$
Description of DBE Work	

Total Contract Value	\$	Total DBE Value	\$
$(\text{Total DBE Value} / \text{Total Contract Value}) * 100 =$		DBE Contract Participation	%

I certify that arrangements have been made, for the foregoing work with the listed DBE firms, to proceed with these subcontracts if awarded this contract. I further understand that any willful falsification, fraudulent statement or misrepresentation will result in appropriate sanctions, which may include debarment and/or prosecution under applicable State (Trans 504) and Federal laws.

Signature of Authorized Representative

Date

Name and Title of Authorized Representative *(Print)*

DBE Subcontract Confirmation

Instructions:

The bidder shall include this form for *each* DBE subcontractor listed on **Form A – DBE Subcontract Commitment**.

Project ID		Bid Due Date	
Project Title		DBE Contract Goal	%
		Total Contract Value	\$

Prime Contractor	
Address	
Email	
Phone	

DBE Subcontractor Acknowledgement

DBE Subcontractor	
Address	
Email	
Phone	
DBE Subcontract Amount	\$
Description of DBE Work	

I certify that arrangements have been made with the bidder, as Prime Contractor, to perform the type of work indicated above for the subcontract value listed above if the bidder is awarded this contract.

Signature of Authorized DBE Representative

Date

Name and Title of Authorized DBE Representative (*Print*)

DBE Subcontract Work Site Verification

Instructions:

This form is used to monitor the work site and/or work efforts of each DBE subcontractor that is participating in the contract if the bidder is awarded the contract as the Prime Contractor. Only DBE firms, certified as of the bid/proposal due date, and as maintained on the WisDOT Unified Certification Program Directory [WisDotUCPDirectory](#) may be included. Complete all of the requested information. Add additional sheets as needed.

Date of Site Visit/Review:	
----------------------------	--

Project Title		DBE Contract Goal	%
---------------	--	-------------------	---

Prime Contractor	
Address	
Email	
Phone	

DBE?	
Yes	No

Description of work <i>(If Prime Contractor is a DBE)</i>	
--	--

Identify DBE subcontractor:

DBE Subcontractor	
Address	
Email	
Phone	
DBE Subcontract Amount	\$
Description of DBE Work	

<p>Explain the steps taken to verify the work completed by the DBE Subcontractor.</p> <p><i>Examples include: onsite visit, review of work completed such as a final report or other project deliverable, payroll documents, etc.</i></p>	
--	--

I certify the information in this document is complete and accurate.

Signature of Authorized Representative

Date of Site Visit

Name and Title of Authorized Representative *(Print)*

Transit DBE Contract Goal Determination Worksheet
Transit Procurement (RFP)

Complete this form to determine whether a project and/or procurement specific DBE goal should be established.

Date: [Click here to enter text.](#)

Recipient: Click here to enter text.	
Subrecipient Contact Name: Click here to enter text.	
Phone: Click here to enter text.	E-mail: Click here to enter text.
Estimated Solicitation Date:	Estimated Cost: FTA Cost Share:
Project Title or Description: Click here to enter text.	
Scope of Work:	
Subcontracting Opportunities: Click here to enter text.	
Annual DBE Goal:	Overall Goal .19% Race Neutral 0.0% Race Conscious 0.0%
Year-to-date achievement (as of 12/31/21) is	
Based on the above analysis, the following DBE contract goal is recommended:	(i) Click here to enter text.% (ii) Discretionary
Comments/Discussion:	

Transit DBE Contract Goal Determination Worksheet
Transit Procurement (RFP)

Approvals

City of Onalaska

Signature

Date

UNIFORM REPORT OF DBE COMMITMENTS/AWARDS AND PAYMENTS

The City of Onalaska DBE 3-Year Goal: Race Conscious Projection: **0%** Race Neutral Projection: **0%** OVERALL Goal: **0%**

Awards/Commitments this Reporting Period

		A	B	C	D	E	F	G	H	I
A	Prime Contracts and Subcontracts Awarded - Awards/Commitments Made During This Reporting Period:	Total Dollars (All Types)	Total Number (All Types)	Total to DBEs (\$)	Total to DBEs (#)	Total Dollars to DBEs/Race Conscious	Total Number to DBEs/Race Conscious	Total Dollars to DBEs/Race Neutral	Total Number to DBEs/Race Neutral	% of Total to DBEs
8	Prime Contracts Awarded / Committed This Period	\$ -	0	\$ -	0			\$ -	0	#DIV/0!
9	Sub Contracts Awarded / Committed This Period	\$ -	0	\$ -	0	\$ -	0	\$ -	0	#DIV/0!
10	Total			\$ -	0	\$ -	0	\$ -	0	#DIV/0!

		Total to DBE (dollar)			Total to DBE (number)		
		A	B	C	D	E	F
		Women	Men	Total	Women	Men	Total
B	DBE Awards/Commitments This Period Breakdown by Ethnicity & Gender						
11	Black American	\$ -	\$ -	\$ -	0	0	0
12	Hispanic American	\$ -	\$ -	\$ -	0	0	0
13	Native American	\$ -	\$ -	\$ -	0	0	0
14	Asian-Pacific American	\$ -	\$ -	\$ -	0	0	0
15	Subcontinent Asian Americans	\$ -	\$ -	\$ -	0	0	0
16	Non-Minority	\$ -	\$ -	\$ -	0	0	0
17	TOTAL	\$ -	\$ -	\$ -	0	0	0

Payments on Ongoing Contracts

		A	B	C	D	E	F
C	Report Activity of Ongoing Contracts	Total Number of Contracts	Total Dollars	Total Number of Contracts	Total Payments to DBE Firms	Total Number of DBE Firms Paid	Percent to DBEs
18	Prime and sub contracts currently in progress	0	\$ -	0	\$ -	0	#DIV/0!
		A	B	C	D	E	
D	Actual Payments on Contracts Completed This Period	Number of Prime Contracts Completed	Total Dollar Value of Completed Prime Contracts	DBE Participation Needed to Meet Goals (Dollars)	Total DBE Participation Dollars	Percentage of Total DBE Participation Dollars	
19	Race Conscious	0	\$ -	\$ -	\$ -	-	#DIV/0!
20	Race Neutral	0	\$ -		\$ -	-	#DIV/0!
21	Total	0	\$ -		\$ -	-	#DIV/0!

Note: See FTA website for updated guidance on DBE Semi Annual Reporting requirements.

<https://www.transit.dot.gov/regulations-and-guidance/civil-rights-ada/dbe-reporting-form-excel>